



CLOSED LOOP DESIGN LLC
CLD SC57x CDC Library v.1.00 Users Guide
Users Guide Revision 1.00

For Use with Analog Devices ADSP-SC57x Series Processors

Closed Loop Design, LLC

75 McCabe Dr Unit 19932
Reno, NV 89511
support@cld-llc.com

Table of Contents

- Disclaimer 4
- Introduction..... 4
- USB Background 4
 - CLD SC57x CDC Library USB Enumeration Flow Chart 5
 - CLD SC57x CDC Library Bulk OUT Flow Chart..... 7
 - CLD SC57x CDC Library Bulk IN Flow Chart..... 8
- CDC Abstract Control Model Background..... 9
 - CDC Notifications Interrupt IN Endpoint..... 9
 - CDC Abstract Control Model Control Endpoint Requests 10
- Dependencies 19
- Memory Footprint..... 19
- CLD SC57x CDC Library Scope and Intended Use..... 19
- CLD CDC Uart Example v1.00 Description 19
- CLD SC57x CDC Library API 20
 - cld_sc57x_cdc_lib_init 20
 - cld_sc57x_cdc_lib_main..... 33
 - cld_sc57x_cdc_lib_transmit_serial_data 34
 - cld_sc57x_cdc_lib_send_network_connection_state 35
 - cld_sc57x_cdc_lib_send_response_available..... 36
 - cld_sc57x_cdc_lib_send_serial_state 37
 - cld_sc57x_cdc_lib_resume_paused_serial_data_transfer..... 38
 - cld_sc57x_cdc_lib_resume_paused_control_transfer..... 38
 - cld_lib_usb_connect 39
 - cld_lib_usb_disconnect..... 39
 - cld_time_125us_tick..... 40
 - cld_usb0_isr_callback & cld_usb1_isr_callback..... 40
 - cld_time_get..... 40
 - cld_time_passed_ms 41
 - cld_time_get_125us 41
 - cld_time_passed_125us 42
 - cld_lib_status_decode 42
- Using the ADSP-SC573 Ez-Board 44

Connections: 44

Adding the CLD SC57x CDC Library to an Existing CrossCore Embedded Studio Project 44

User Firmware Code Snippets 46

 main.c 46

 user_cdc.c 47

Disclaimer

This software is supplied "AS IS" without any warranties, express, implied or statutory, including but not limited to the implied warranties of fitness for purpose, satisfactory quality and non-infringement. Closed Loop Design LLC extends you a royalty-free right to use, reproduce, and distribute executable files created using this software for use on Analog Devices SC5xx family processors only. Nothing else gives you the right to use this software.

Introduction

The Closed Loop Design (CLD) CDC library creates a simplified interface for developing a Communication Device Class (CDC) Abstract Control Model (ACM) Serial Emulation device using the Analog Devices ADSP-SC573 EZ-Board. The CLD SC57x CDC Library also includes support for a serial console and timer functions which facilitates creating timed events quickly and easily. The library's SC573 application interface is comprised of parameters used to customize the library's functionality as well as callback functions used to notify the User application of events. These parameters and functions are described in greater detail in the CLD SC57x CDC Library API section of this document.

USB Background

The following is a very basic overview of some of the USB concepts which are necessary to use the CLD SC57x CDC Library. However, it is still recommended that developers have at least a basic understanding of the USB 2.0 protocol as well as the CDC 1.2 Protocol. The following are some resources to refer to when working with USB:

- The USB 2.0 Specification: http://www.usb.org/developers/docs/usb20_docs/
- The USB CDC Class specification v1.2: http://www.usb.org/developers/docs/devclass_docs/
- USB in a Nutshell: A free online wiki that explains USB concepts. <http://www.beyondlogic.org/usbnutshell/usb1.shtml>
- "USB Complete" by Jan Axelson ISBN: 1931448086

USB is a polling based protocol where the Host initiates all transfers, so all USB terminology is from the Host's perspective. For example a 'IN' transfer is when data is sent from a Device to the Host, and an 'OUT' transfer is when the Host sends data to a Device.

The USB 2.0 protocol defines a basic framework devices must implement in order to work correctly. This framework is defined in the Chapter 9 of the USB 2.0 protocol, and is often referred to as the USB 'Chapter 9' functionality. Part of the Chapter 9 framework is standard USB requests used by a USB Host to control the Device. Another part of the Chapter 9 framework is the USB Descriptors. These USB Descriptors are used to notify the Host of the Device's capabilities when the Device is attached. The USB Host uses the descriptors and the Chapter 9 standard requests to configure the Device. This process is called the USB Enumeration. The CLD SC57x CDC Library includes support for the USB standard requests and USB Enumeration using some of the parameters specified by the User application when initializing the library. These parameters are discussed in the `cld_sc57x_cdc_lib_init` section of this document. The CLD SC57x CDC Library facilitates USB enumeration and is Chapter 9 compliant without User Application intervention as shown in the flow chart below. If you'd like additional information on USB Chapter 9 functionality or USB Enumeration please refer to one of the USB resources listed above.

CLD SC57x CDC Library USB Enumeration Flow Chart



All USB data is transferred using Endpoints which act as a source or sink for data based on the endpoint's direction (IN or OUT). The USB protocol defines four types of Endpoints, each of which has unique characteristics that dictate how they are used. The four Endpoint types are: Control, Interrupt, Bulk and Isochronous. Data transmitted over USB is broken up into blocks of data called packets. For each endpoint type there are restrictions on the allowed max packet size. The allowed max packet sizes also vary based on the USB connection speed. Please refer to the USB 2.0 protocol for more information about the max packet size supported by the four endpoint types.

The CLD SC57x CDC Library uses Control, Interrupt and Bulk endpoints, so these endpoint types will be discussed in more detail below.

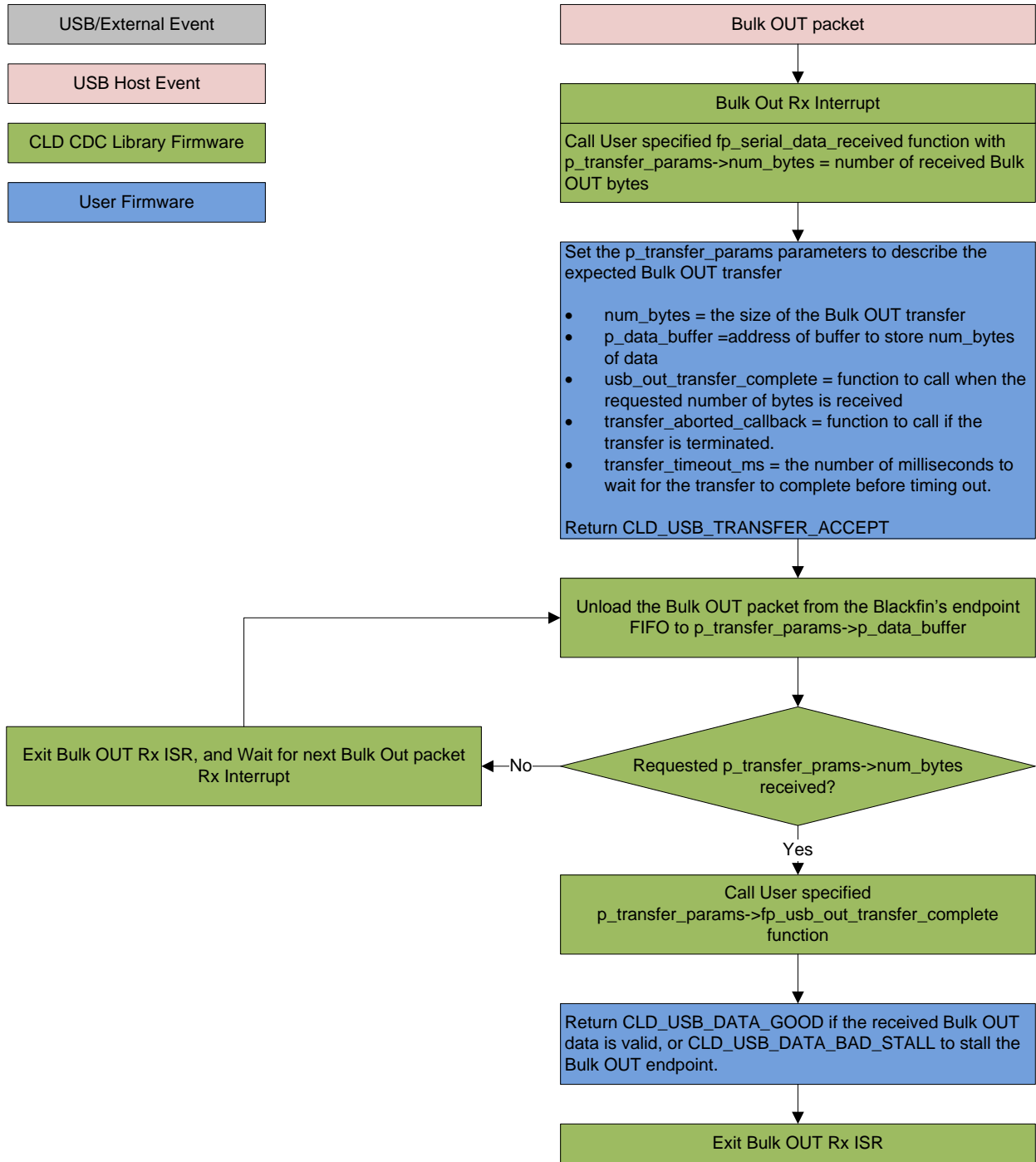
A Control Endpoint is the only bi-directional endpoint type, and is typically used for command and status transfers. A Control Endpoint transfer is made up of three stages (Setup Stage, Data Stage and Status Stage). The Setup Stage sets the direction and size of the optional Data Stage. The Data Stage is where any data is transferred between the Host and Device. The Status Stage gives the Device the opportunity to report if an error was detected during the transfer. All USB Devices are required to include a default Control Endpoint at endpoint number 0, referred to as Endpoint 0. Endpoint 0 is used to implement all the USB Protocol defined Chapter 9 framework and USB Enumeration. In the CLD SC57x CDC Library Endpoint 0 is used for USB Chapter 9 requests, as well as CDC requests. These CDC requests are discussed in more detail in the CDC Abstract Control Model Background section of this document.

Interrupt Endpoints are used to transfer blocks of data where data integrity, and deterministic timing is required. Deterministic timing is achieved by allowing the Device to specify a requested interval used by the Host to initiate USB transfers, which gives the Device a guaranteed maximum time between opportunities to transfer data. Interrupt Endpoints are particularly useful when the Device needs to report to the Host when a change is detected without having to wait for the Host to ask for the information. An example of how this is used with CDC is when a parity error is detected. When a CDC device detects a parity error the device reports the error condition to the Host in a Serial State Notification using the CDC Interrupt IN endpoint. This is more efficient than requiring the host to repeatedly send Control Endpoint requests asking an error has occurred.

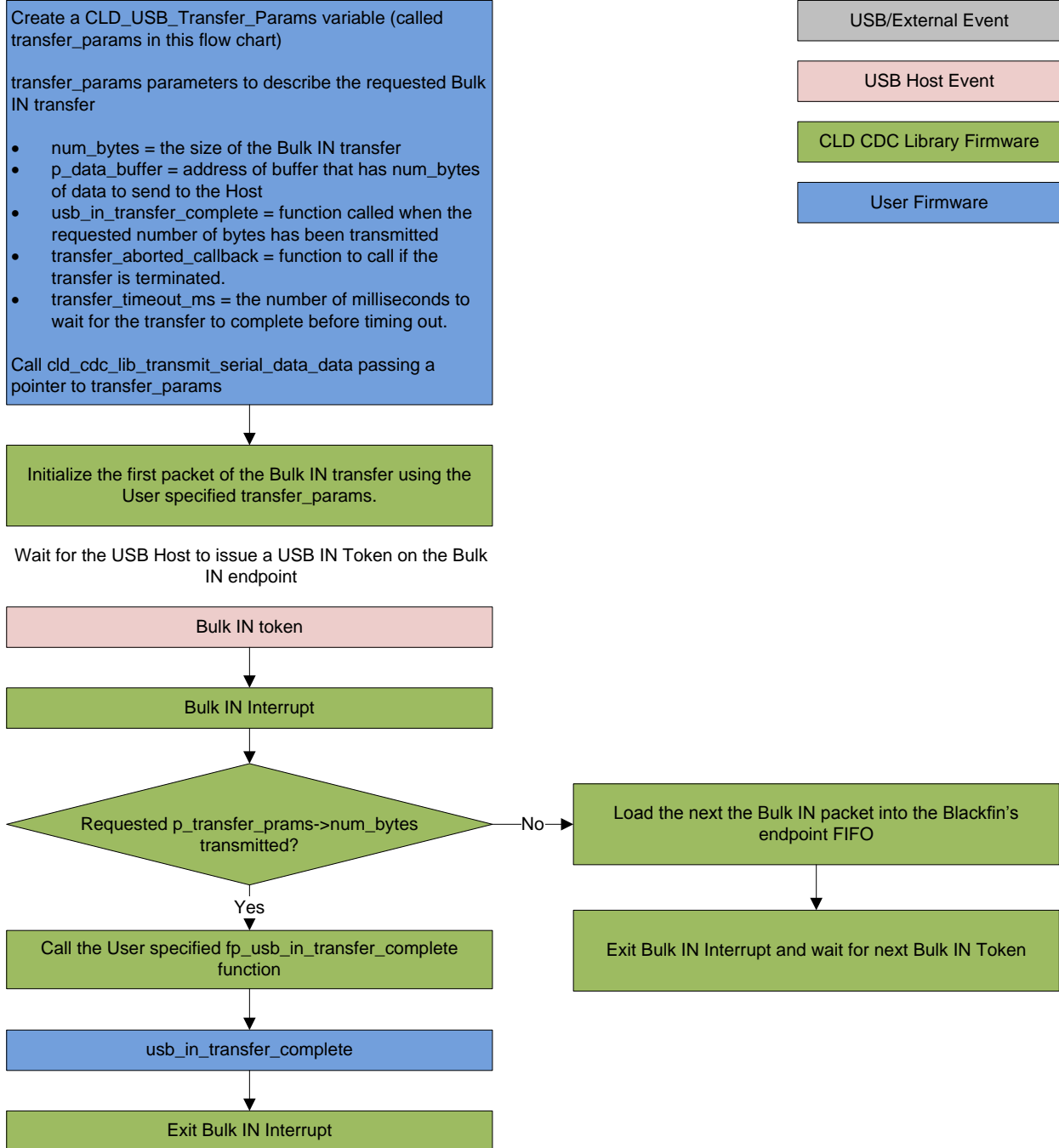
Bulk Endpoints are used to transfer large amounts of data where data integrity is critical, but does not require deterministic timing. A characteristic of Bulk Endpoints is that they can fill USB bandwidth that isn't used by the other endpoint types. This makes Bulk the lowest priority endpoint type, but it can also be the fastest as long as the other endpoints don't saturate the USB Bus. An example of a device that uses Bulk endpoints is a Mass Storage Device (thumb drives). The CLD SC57x CDC Library includes a Bulk IN and Bulk OUT endpoint, which are used to send and receive serial data with the USB Host, respectively.

The flow charts below give an overview of how the CLD SC57x CDC Library and the User firmware interact to process Bulk OUT and Bulk IN transfers. For the Interrupt IN endpoint the CLD SC57x CDC Library uses individual functions to send CDC Notifications, which abstracts the User from the Interrupt IN endpoint. Additionally, the User firmware code snippets included at the end of this document provide a basic framework for implementing the CDC firmware using the CLD SC57x CDC Library.

CLD SC57x CDC Library Bulk OUT Flow Chart



CLD SC57x CDC Library Bulk IN Flow Chart



CDC Abstract Control Model Background

The USB Communication Device Class (CDC) Abstract Control Model (ACM) protocol is a USB Standard Class protocol released by the USB IF committee. The Communication Device Class was created to provide a standardized way for USB communication devices to interface with a computer, and covers a wide range of communication devices. The CLD SC57x CDC Library implements a Abstract Control Model Serial Emulation device, so the scope of this document is limited to the CDC ACM Serial Emulation functionality.

A CDC device is comprised of two USB interfaces. The first interface uses the Communication Device Class and includes a single Interrupt IN endpoint used to send Notifications to the host. The second interface uses the Data Interface Class and includes a Bulk IN and Bulk OUT endpoint, which are used to transfer the serial emulation data with the USB Host.

CDC Notifications Interrupt IN Endpoint

The CDC protocol requires all devices to include a Interrupt IN endpoint which is used to send CDC Notifications to the Host. For the CDC Abstract Control Model these Notifications include the Network Connection, Response Available and Serial State Notifications. These Notifications are discussed below:

Network Connection Notification

The Network Connection Notification is used to report if the network is connected or disconnected to the Host.

Response Available Notification

The Response Available Notification is used to notify the Host that a protocol specific response is available, which is retrieved by the Host using the Get Encapsulated Response control endpoint request described in the CDC Abstract Control Model Control Endpoint Requests section of this document.

Serial State Notification

The Serial State Notification is similar to the interrupt status register of a UART, and is used to report the serial link status to the Host. The table below shows the data fields of the Serial State Notification. All of the Serial State fields are active high, so a field is set to a '1' when it is active.

Field	Description
bOverRun	Received serial data was received while processing the previously received data.
bParity	A parity error has occurred.
bFraming	A framing error has occurred
bRingSignal	The current state of the ring signal detection
bBreak	The current state of the break detection.
bTxCarrier	State of the transmission carrier. This corresponds to the RS-232 DSR signal.
bRxCarrier	State of the receive carrier detection. This signal corresponds to the RS-232 DCD signal.

Once the Serial State Notification has been sent the device will re-evaluate the above fields. For the bTxCarrier and bRxCarrier the Serial State Notification is sent when these signals change. For the remaining fields once the Serial State Notification has been sent their value is reset to zero, and will be sent again when the field is set to a '1'.

CDC Abstract Control Model Control Endpoint Requests

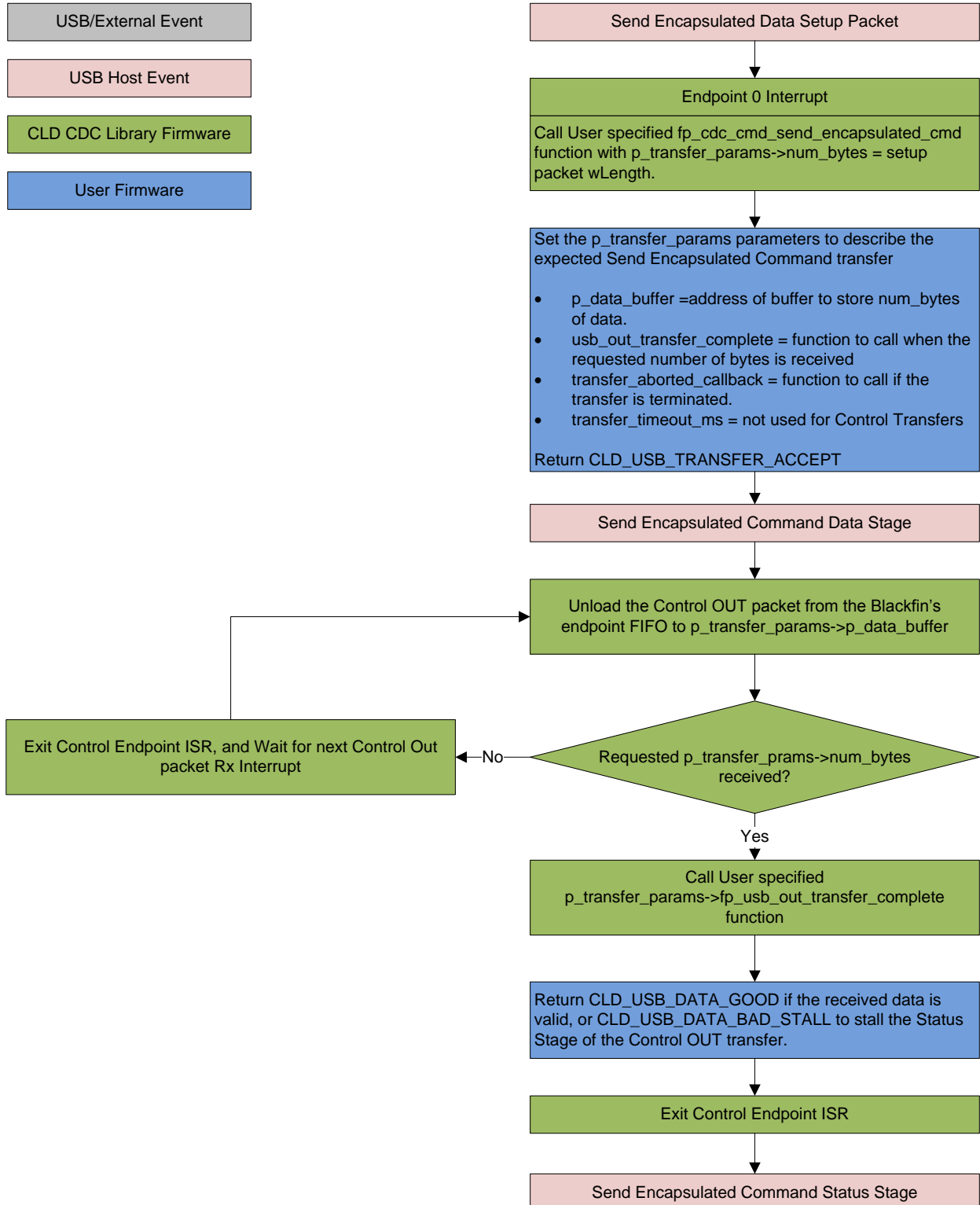
The CDC Abstract Control Model defines a couple Control Endpoint requests that a CDC peripheral is required to support as well as some optional Control Endpoint requests. The Control Endpoint requests used by the CLD SC57x CDC Library are explained in the following sections, and include flow charts showing how the CLD SC57x CDC Library and the User firmware interact to the Control Endpoint requests.

Additionally, the User firmware code snippets included at the end of this document provide a basic framework for implementing the CDC control requests using the CLD SC57x CDC Library.

Send Encapsulated Command (required)

Send Encapsulated Command is a Control OUT request and is used by the Host to send protocol specific data to the device.

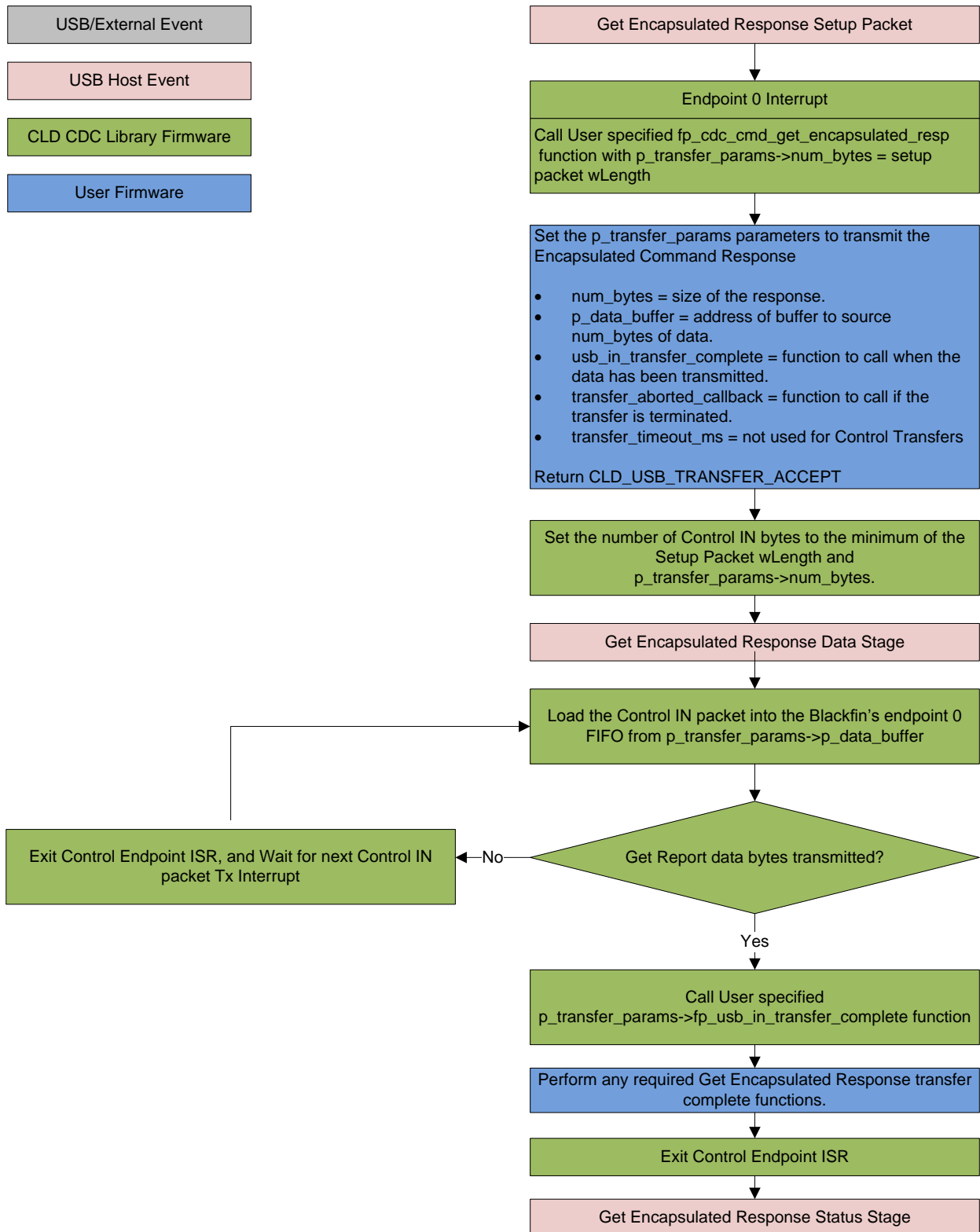
CLD CDC Send Encapsulated Command Flow Chart



Get Encapsulated Command (required)

Get Encapsulated Command is a Control IN request used by the Host to request protocol specified data.

CLD SC57x CDC Library Get Encapsulated Command Flow Chart



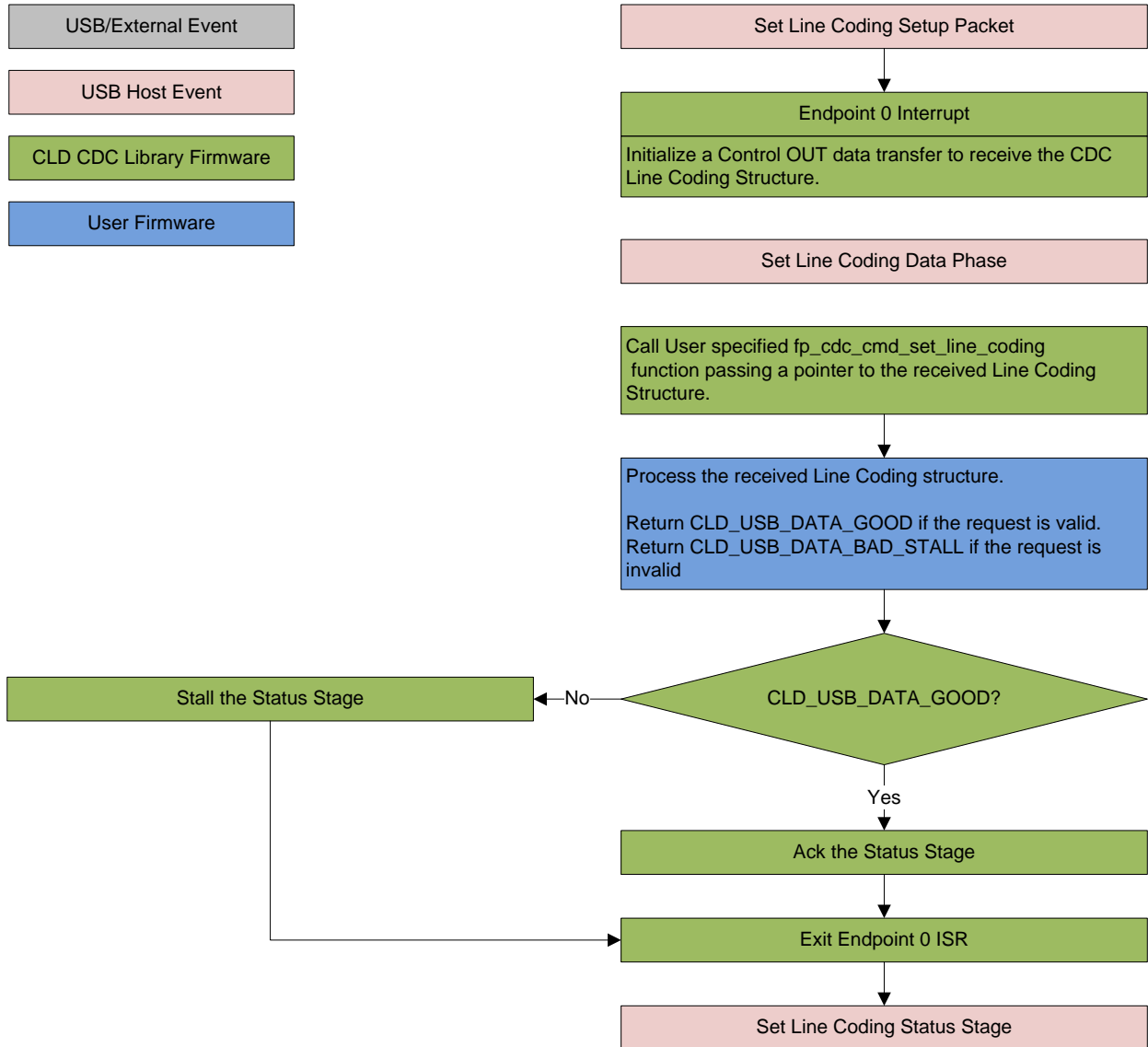
Set Line Coding (optional)

The Set Line Coding Control OUT request is used by the Host configure the UART parameters of emulated serial port. The Set Line Coding request includes the following line coding structure in the Control OUT Data Phase.

```
typedef struct
{
    unsigned long data_terminal_rate;           /* CDC Data Terminal Rate in
                                                bits per second. */
    unsigned char num_stop_bits;              /* CDC Number of stop bits
                                                0 = 1 stop bit
                                                1 = 1.5 stop bits
                                                2 = 2 stop bits */
    unsigned char parity;                    /* CDC Parity setting
                                                0 = None
                                                1 = Odd
                                                2 = Even
                                                3 = Mark
                                                4 = Space */
    unsigned char num_data_bits;             /* CDC number of data bits
                                                (Only 5, 6, 7, 8 and 16
                                                allowed) */
} CLD_CDC_Line_Coding;
```

In response to a Set Line Coding command the CDC device should implement the requested configuration, or stall the endpoint if the request is invalid.

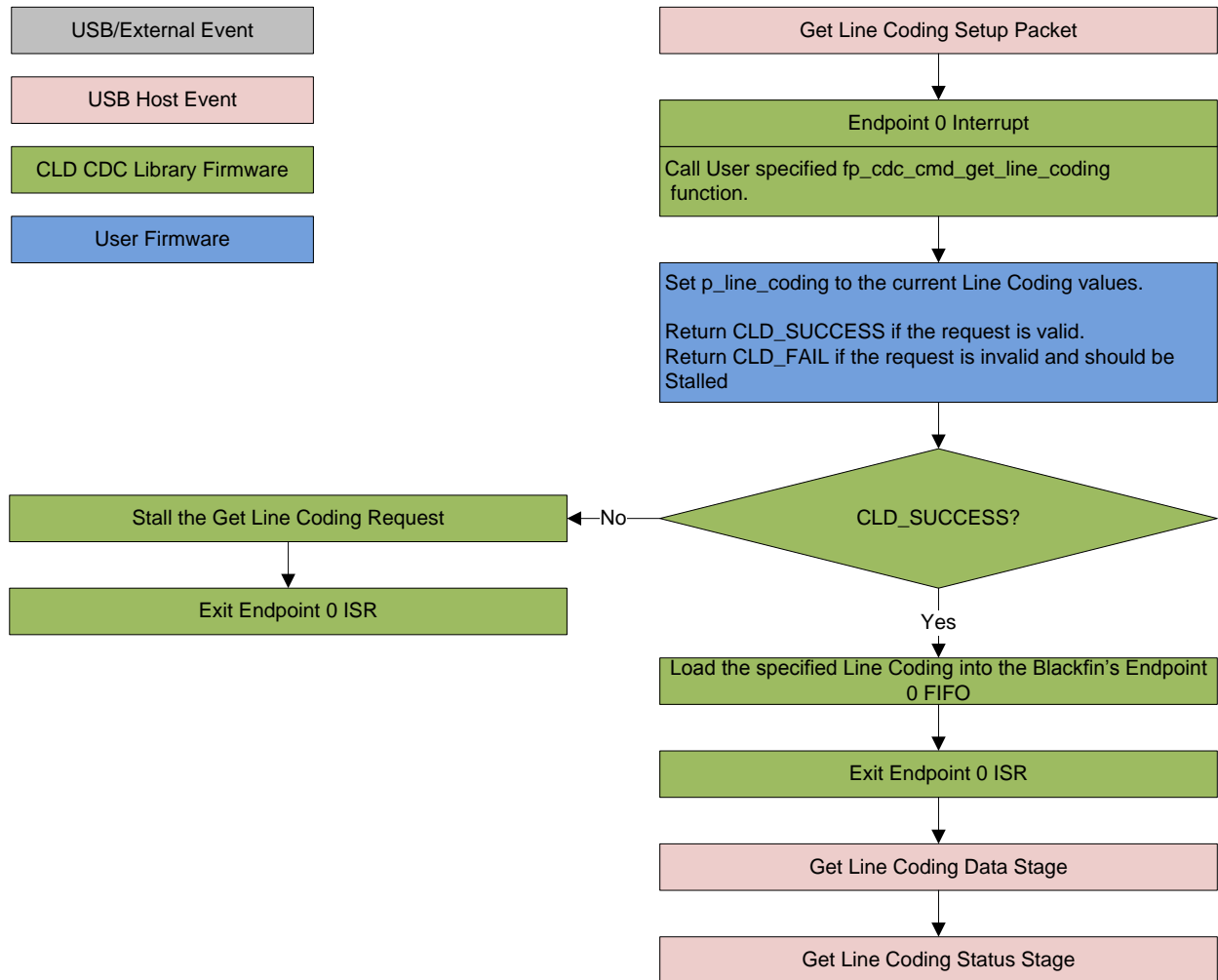
CLD SC57x CDC Library Set Line Coding Flow Chart



Get Line Coding (optional)

The Get Line Coding Control IN request is used by the Host request current UART parameters of emulated serial port. The Get Line Coding request includes line coding structure described in the Set Line Coding section in the Control IN Data Phase.

CLD SC57x CDC Library Get Line Coding Flow Chart



Set Control Line State (optional)

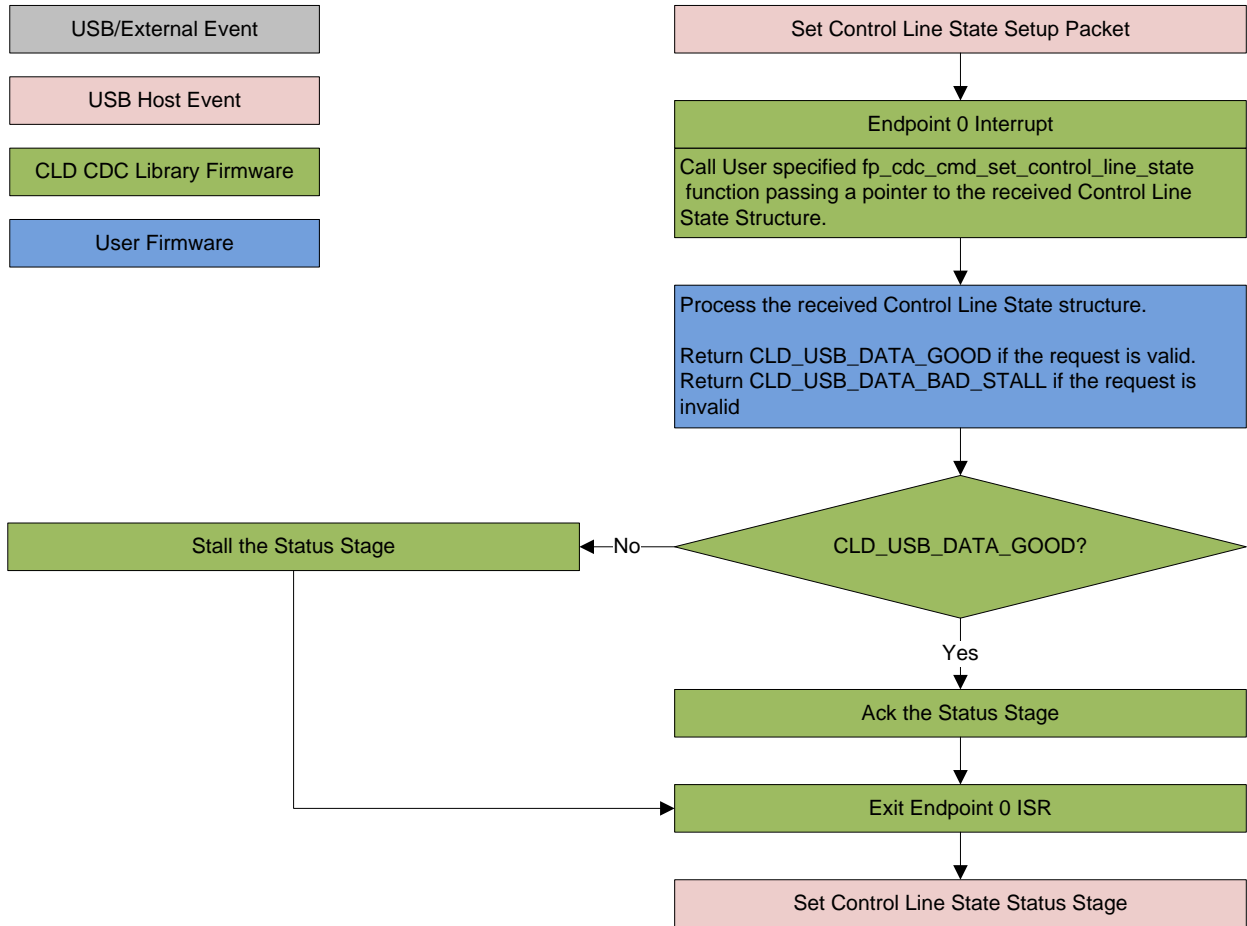
The Set Control Line State Control OUT request is used by the Host to set the value of the emulated serial port RS-232 RTS and DTR control signals. The Set Control Line State request includes the following control signal structure in the Control OUT Data Phase.

```
typedef struct
{
    union
    {
        struct
        {
            unsigned short dte_present : 1;           /* Indicates to DCE if DTE is
                                                         present or not.
                                                         This signal corresponds to
                                                         V.24 signal 108/2
                                                         and RS-232 signal DTR.
                                                         0 - Not Present
                                                         1 - Present */

            unsigned short activate_carrier : 1;     /* Carrier control for half
                                                         duplex modems.
                                                         This signal corresponds to
                                                         V.24 signal 105 and RS-232
                                                         signal RTS.
                                                         0 - Deactivate carrier
                                                         1 - Activate carrier
                                                         The device ignores the
                                                         value of this bit when
                                                         operating in full duplex
                                                         mode. */

            unsigned short reserved : 14;
        } bits;
        unsigned short state;
    } u;
} CLD_CDC_Control_Line_State;
```

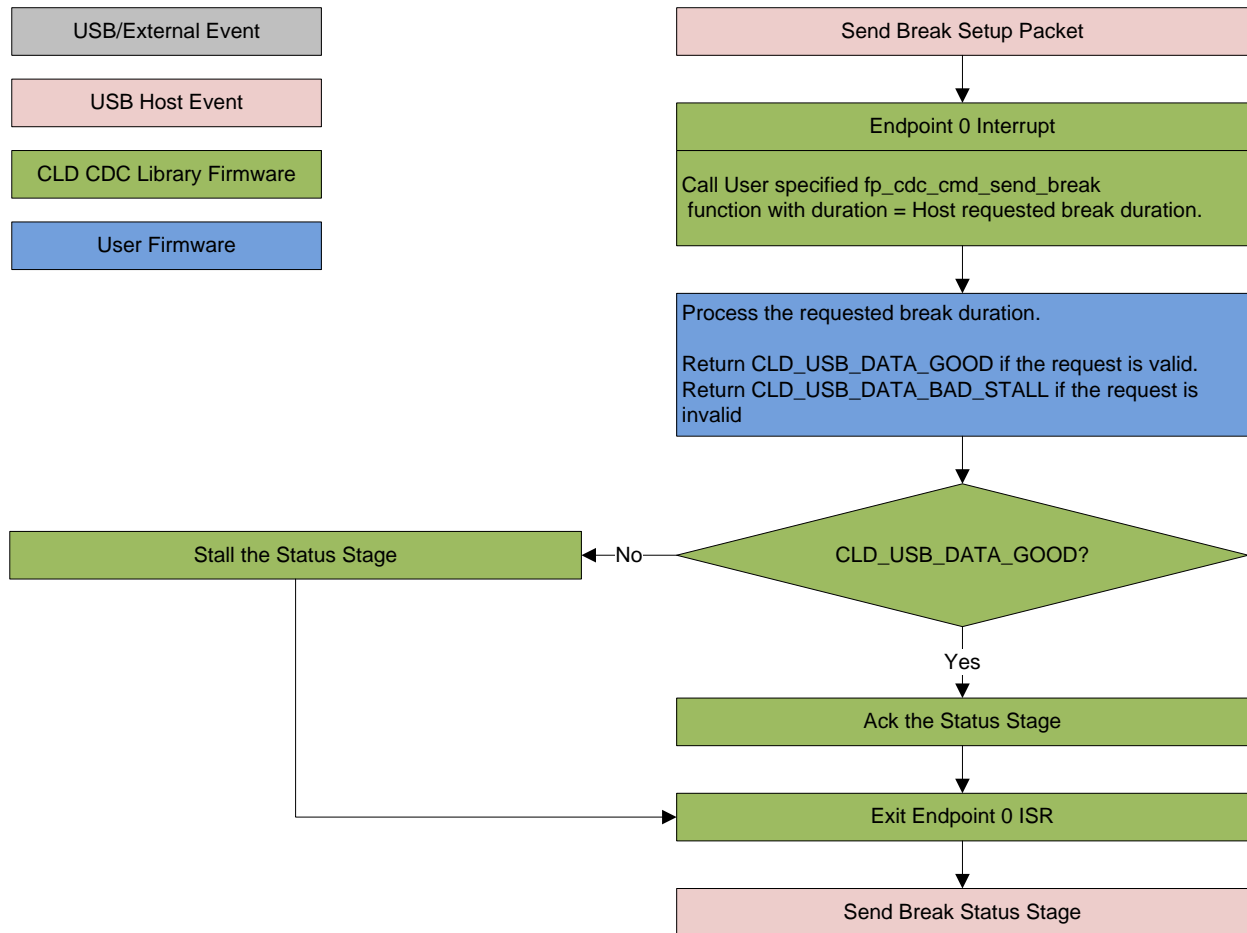

CLD SC57x CDC Library Set Control Line State Flow Chart



Send Break (optional)

The Send Break Control OUT request is used by the Host request the device to generate a RS-232 style break for the specified duration (in milliseconds). If the duration is set to 0xFFFF the device should generate a break until a another Send Break command is received with a duration of 0.

CLD SC57x CDC Library Send Break Flow Chart



Dependencies

In order to function properly the CLD SC57x CDC Library requires the following resources:

- 24Mhz clock input connected to the USB0_CLKIN pin.
- The User firmware is responsible for configuring all other non-USB specific peripherals, including clocks, power modes, etc.

Memory Footprint

The CLD SC57x CDC Library approximate memory footprint is as follows:

Code memory:	16093 bytes
Data memory:	3067 bytes
Total:	19160 bytes or 18.7k

Note: The CLD SC57x CDC Library is currently optimized for speed (not space).

CLD SC57x CDC Library Scope and Intended Use

The CLD SC57x CDC Library implements a USB Communication Class Abstract Control Model Serial Emulation device, as well as providing time measurements functionality. The CLD SC57x CDC Library is designed to be added to an existing User project, and as such only includes the functionality needed to implement the above mentioned USB, time measurement features. All other aspects of SC57x processor configuration must be implemented by the User code.

CLD CDC Uart Example v1.00 Description

The CLD_CDC_Ex_v1_00 project provided with the CLD SC57x CDC Library implements a basic USB to Serial loopback device. This example is not intended to be a used as a complete stand alone project. Instead, this project only includes the User functionality required to create a basic USB to Serial device, and it is up to the User to include their own custom system initialization and any extra required functionality.

CLD SC57x CDC Library API

The following CLD library API descriptions include callback functions that are called by the library based on USB events. The following color code is used to identify if the callback function is called from the USB interrupt service routine, or from mainline. The callback functions called from the USB interrupt service routine are also italicized so they can be identified when printed in black and white.

Callback called from the mainline context

Callback called from the USB interrupt service routine

cld_sc57x_cdc_lib_init

CLD_RV **cld_sc57x_cdc_lib_init** (CLD_SC57x_CDC_Lib_Init_Params *
cld_sc57x_cdc_lib_params)

Initialize the CLD SC57x CDC Library.

Arguments

cld_sc57x_cdc_lib_params	Pointer to a CLD_SC57x_CDC_Lib_Init_Params structure that has been initialized with the User Application specific data.
--------------------------	---

Return Value

This function returns the CLD_RV type which represents the status of the CLD CDC initialization process. The CLD_RV type has the following values:

CLD_SUCCESS	The library was initialized successfully
CLD_FAIL	There was a problem initializing the library
CLD_ONGOING	The library initialization is being processed

Details

The cld_sc57x_cdc_lib_init function is called as part of the device initialization and must be repeatedly called until the function returns CLD_SUCCESS or CLD_FAIL. If CLD_FAIL is returned the library will output an error message identifying the cause of the failure using the cld_console UART if enabled by the User application. Once the library has been initialized successfully the main program loop can start.

The CLD_SC57x_CDC_Lib_Init_Params structure is described below:

typedef struct

```
{
    CLD_Boolean enable_dma;

    unsigned short vendor_id;
    unsigned short product_id;

    unsigned char usb_bus_max_power;
    unsigned short device_descriptor_bcdDevice;

    CLD_Serial_Data_Bulk_Endpoint_Params * p_serial_data_rx_endpoint_params;
    CLD_Serial_Data_Bulk_Endpoint_Params * p_serial_data_tx_endpoint_params;
```

```

CLD_CDC_Notification_Endpoint_Params * p_notification_endpoint_params;

CLD_USB_Transfer_Request_Return_Type (*fp_serial_data_received)
    (CLD_USB_Transfer_Params * p_transfer_data);

CLD_USB_Transfer_Request_Return_Type (*fp_cdc_cmd_send_encapsulated_cmd)
    (CLD_USB_Transfer_Params * p_transfer_data);

CLD_USB_Transfer_Request_Return_Type (*fp_cdc_cmd_get_encapsulated_resp)
    (CLD_USB_Transfer_Params * p_transfer_data);

CLD_USB_Data_Received_Return_Type (*fp_cdc_cmd_set_line_coding)
    (CLD_CDC_Line_Coding * p_line_coding);

CLD_RV (*fp_cdc_cmd_get_line_coding) (CLD_CDC_Line_Coding * p_line_coding);

CLD_USB_Data_Received_Return_Type (*fp_cdc_cmd_set_control_line_state)
    (CLD_CDC_Control_Line_State * p_control_line_state);

CLD_USB_Data_Received_Return_Type (*fp_cdc_cmd_send_break)
    (unsigned short duration);

unsigned char support_cdc_network_notification;
unsigned short cdc_class_bcd_version;
unsigned char cdc_class_control_protocol_code;

const char * p_usb_string_manufacturer;
const char * p_usb_string_product;
const char * p_usb_string_serial_number;
const char * p_usb_string_configuration;
const char * p_usb_string_communication_class_interface;
const char * p_usb_string_data_class_interface;

unsigned short usb_string_language_id;
void (*fp_cld_usb_event_callback) (CLD_USB_Event event);
void (*fp_cld_lib_status) (unsigned short status_code, void * p_additional_data,
    unsigned short additional_data_size);

} CLD_SC57x_CDC_Lib_Init_Params;

```

A description of the CLD_SC57x_CDC_Lib_Init_Params structure elements is included below:

Structure Element	Description
enable_dma	Used to enable/disable USB DMA support. When set to CLD_TRUE DMA is enabled for transfers larger than 32 bytes that are aligned to a 4-byte boundary. Note: When DMA is enabled make sure the data buffers are located in un-cached memory to avoid cache coherency issues.
vendor_id	The 16-bit USB vendor ID returned to the USB Host in the USB Device Descriptor. USB Vendor ID's are assigned by the USB-IF and can be purchased through their website (www.usb.org).
product_id	The 16-bit product ID returned to the USB Host in the USB Device Descriptor.
usb_bus_max_power	USB Configuration Descriptor bMaxPower value (0 = self powered). Refer to the USB 2.0 protocol section 9.6.3.
device_descriptor_bcd_device	USB Device Descriptor bcdDevice value. Refer to the USB 2.0 protocol section 9.6.1.

p_serial_data_rx_endpoint_params	<p>Pointer to a CLD_Serial_Data_Bulk_Endpoint_Params structure that describes how the Bulk OUT endpoint should be configured. The CLD_Serial_Data_Bulk_Endpoint_Params structure contains the following elements:</p> <table border="1" data-bbox="669 361 1442 1102"> <thead> <tr> <th data-bbox="669 361 1068 394">Structure Element</th> <th data-bbox="1068 361 1442 394">Description</th> </tr> </thead> <tbody> <tr> <td data-bbox="669 394 1068 699">endpoint_num</td> <td data-bbox="1068 394 1442 699">Sets the USB endpoint number of the Bulk endpoint. The endpoint number must be within the following range: $1 \leq \text{endpoint_num} \leq 12$. Any other endpoint number will result in the <code>cld_sc57x_cdc_lib_init</code> function returning <code>CLD_FAIL</code>.</td> </tr> <tr> <td data-bbox="669 699 1068 905">max_packet_size_full_speed</td> <td data-bbox="1068 699 1442 905">Sets the Bulk endpoint's max packet size when operating at Full Speed. The valid Bulk endpoint max packet sizes are as follows: 8, 16, 32, and 64 bytes.</td> </tr> <tr> <td data-bbox="669 905 1068 1102">max_packet_size_high_speed</td> <td data-bbox="1068 905 1442 1102">Sets the Bulk endpoint's max packet size when operating at High Speed. The valid Bulk endpoint max packet sizes are as follows: 8, 16, 32, 64 and 512 bytes.</td> </tr> </tbody> </table>	Structure Element	Description	endpoint_num	Sets the USB endpoint number of the Bulk endpoint. The endpoint number must be within the following range: $1 \leq \text{endpoint_num} \leq 12$. Any other endpoint number will result in the <code>cld_sc57x_cdc_lib_init</code> function returning <code>CLD_FAIL</code> .	max_packet_size_full_speed	Sets the Bulk endpoint's max packet size when operating at Full Speed. The valid Bulk endpoint max packet sizes are as follows: 8, 16, 32, and 64 bytes.	max_packet_size_high_speed	Sets the Bulk endpoint's max packet size when operating at High Speed. The valid Bulk endpoint max packet sizes are as follows: 8, 16, 32, 64 and 512 bytes.
Structure Element	Description								
endpoint_num	Sets the USB endpoint number of the Bulk endpoint. The endpoint number must be within the following range: $1 \leq \text{endpoint_num} \leq 12$. Any other endpoint number will result in the <code>cld_sc57x_cdc_lib_init</code> function returning <code>CLD_FAIL</code> .								
max_packet_size_full_speed	Sets the Bulk endpoint's max packet size when operating at Full Speed. The valid Bulk endpoint max packet sizes are as follows: 8, 16, 32, and 64 bytes.								
max_packet_size_high_speed	Sets the Bulk endpoint's max packet size when operating at High Speed. The valid Bulk endpoint max packet sizes are as follows: 8, 16, 32, 64 and 512 bytes.								
p_serial_data_tx_endpoint_params	<p>Pointer to a CLD_Serial_Data_Bulk_Endpoint_Params structure that describes how the Bulk IN endpoint should be configured. The CLD_Serial_Data_Bulk_Endpoint_Params structure contains the following elements:</p> <table border="1" data-bbox="669 1268 1442 1879"> <thead> <tr> <th data-bbox="669 1268 1068 1302">Structure Element</th> <th data-bbox="1068 1268 1442 1302">Description</th> </tr> </thead> <tbody> <tr> <td data-bbox="669 1302 1068 1606">endpoint_num</td> <td data-bbox="1068 1302 1442 1606">Sets the USB endpoint number of the Bulk endpoint. The endpoint number must be within the following range: $1 \leq \text{endpoint_num} \leq 12$. Any other endpoint number will result in the <code>cld_sc57x_cdc_lib_init</code> function returning <code>CLD_FAIL</code>.</td> </tr> <tr> <td data-bbox="669 1606 1068 1812">max_packet_size_full_speed</td> <td data-bbox="1068 1606 1442 1812">Sets the Bulk endpoint's max packet size when operating at Full Speed. The valid Bulk endpoint max packet sizes are as follows: 8, 16, 32, and 64 bytes.</td> </tr> <tr> <td data-bbox="669 1812 1068 1879">max_packet_size_high_speed</td> <td data-bbox="1068 1812 1442 1879">Sets the Bulk endpoint's max packet size when operating at</td> </tr> </tbody> </table>	Structure Element	Description	endpoint_num	Sets the USB endpoint number of the Bulk endpoint. The endpoint number must be within the following range: $1 \leq \text{endpoint_num} \leq 12$. Any other endpoint number will result in the <code>cld_sc57x_cdc_lib_init</code> function returning <code>CLD_FAIL</code> .	max_packet_size_full_speed	Sets the Bulk endpoint's max packet size when operating at Full Speed. The valid Bulk endpoint max packet sizes are as follows: 8, 16, 32, and 64 bytes.	max_packet_size_high_speed	Sets the Bulk endpoint's max packet size when operating at
Structure Element	Description								
endpoint_num	Sets the USB endpoint number of the Bulk endpoint. The endpoint number must be within the following range: $1 \leq \text{endpoint_num} \leq 12$. Any other endpoint number will result in the <code>cld_sc57x_cdc_lib_init</code> function returning <code>CLD_FAIL</code> .								
max_packet_size_full_speed	Sets the Bulk endpoint's max packet size when operating at Full Speed. The valid Bulk endpoint max packet sizes are as follows: 8, 16, 32, and 64 bytes.								
max_packet_size_high_speed	Sets the Bulk endpoint's max packet size when operating at								

		High Speed. The valid Bulk endpoint max packet sizes are as follows: 8, 16, 32, 64 and 512 bytes.												
p_notification_endpoint_params	<p>Pointer to a CLD_CDC_Notification_Endpoint_Params structure that describes how the Interrupt IN endpoint should be configured. The CLD_CDC_Notification_Endpoint_Params structure contains the following elements:</p> <table border="1"> <thead> <tr> <th>Structure Element</th> <th>Description</th> </tr> </thead> <tbody> <tr> <td>endpoint_num</td> <td>Sets the USB endpoint number of the Interrupt endpoint. The endpoint number must be within the following range: $1 \leq \text{endpoint_num} \leq 12$. Any other endpoint number will result in the <code>cld_sc57x_cdc_lib_init</code> function returning <code>CLD_FAIL</code></td> </tr> <tr> <td>max_packet_size_full_speed</td> <td>Sets the Interrupt endpoint's max packet size when operating at Full Speed. The maximum max packet size is 64 bytes.</td> </tr> <tr> <td>polling_interval_full_speed</td> <td>Full-Speed polling interval in the USB Endpoint Descriptor. (See USB 2.0 section 9.6.6)</td> </tr> <tr> <td>max_packet_size_high_speed</td> <td>Sets the Interrupt endpoint's max packet size when operating at High Speed. The maximum max packet size is 1024 bytes.</td> </tr> <tr> <td>polling_interval_high_speed</td> <td>High-Speed polling interval in the USB Endpoint Descriptor. (See USB 2.0 section 9.6.6)</td> </tr> </tbody> </table>		Structure Element	Description	endpoint_num	Sets the USB endpoint number of the Interrupt endpoint. The endpoint number must be within the following range: $1 \leq \text{endpoint_num} \leq 12$. Any other endpoint number will result in the <code>cld_sc57x_cdc_lib_init</code> function returning <code>CLD_FAIL</code>	max_packet_size_full_speed	Sets the Interrupt endpoint's max packet size when operating at Full Speed. The maximum max packet size is 64 bytes.	polling_interval_full_speed	Full-Speed polling interval in the USB Endpoint Descriptor. (See USB 2.0 section 9.6.6)	max_packet_size_high_speed	Sets the Interrupt endpoint's max packet size when operating at High Speed. The maximum max packet size is 1024 bytes.	polling_interval_high_speed	High-Speed polling interval in the USB Endpoint Descriptor. (See USB 2.0 section 9.6.6)
Structure Element	Description													
endpoint_num	Sets the USB endpoint number of the Interrupt endpoint. The endpoint number must be within the following range: $1 \leq \text{endpoint_num} \leq 12$. Any other endpoint number will result in the <code>cld_sc57x_cdc_lib_init</code> function returning <code>CLD_FAIL</code>													
max_packet_size_full_speed	Sets the Interrupt endpoint's max packet size when operating at Full Speed. The maximum max packet size is 64 bytes.													
polling_interval_full_speed	Full-Speed polling interval in the USB Endpoint Descriptor. (See USB 2.0 section 9.6.6)													
max_packet_size_high_speed	Sets the Interrupt endpoint's max packet size when operating at High Speed. The maximum max packet size is 1024 bytes.													
polling_interval_high_speed	High-Speed polling interval in the USB Endpoint Descriptor. (See USB 2.0 section 9.6.6)													
<i>fp_serial_data_received</i>	<p>Pointer to the function that is called when the Bulk OUT endpoint receives data. This function takes a pointer to the CLD_USB_Transfer_Params structure ('p_transfer_data') as a parameter.</p> <p>The following CLD_USB_Transfer_Params structure elements are used to processed a Bulk OUT transfer:</p> <table border="1"> <thead> <tr> <th>Structure Element</th> <th>Description</th> </tr> </thead> <tbody> <tr> <td>num_bytes</td> <td>The number of bytes to</td> </tr> </tbody> </table>		Structure Element	Description	num_bytes	The number of bytes to								
Structure Element	Description													
num_bytes	The number of bytes to													

		transfer to the p_data_buffer before calling the fp_usb_out_transfer_complete callback function. When the fp_serial_data_received function is called num_bytes is set the number of bytes in the current Bulk OUT packet. If the Bulk OUT total transfer size is known num_bytes can be set to the transfer size, and the CLD SC57x CDC Library will complete the entire bulk transfer without calling fp_serial_data_received again. If num_bytes isn't modified the fp_serial_data_received function will be called for each Bulk OUT packet.
	p_data_buffer	Pointer to the data buffer to store the received Bulk OUT data. The size of the buffer should be greater than or equal to the value in num_bytes.
	<i>fp_usb_out_transfer_complete</i>	Function called when num_bytes of data has been transferred to the p_data_buffer memory.
	<i>fp_transfer_aborted_callback</i>	Function called if there is a problem transferring the requested Bulk OUT data.
	transfer_timeout_ms	Bulk OUT transfer timeout in milliseconds. If the Bulk OUT transfer takes longer than this timeout the transfer is aborted and the fp_transfer_aborted_callback is called. Setting the timeout to 0 disables the timeout
The fp_serial_data_received function returns the CLD_USB_Transfer_Request_Return_Type, which has the following values:		
	Return Value	Description

	CLD_USB_TRANSFER_ACCEPT	Notifies the CLD SC57x CDC Library that the Bulk OUT data should be accepted using the p_transfer_data values.
	CLD_USB_TRANSFER_PAUSE	Requests that the CLD SC57x CDC Library pause the current transfer. This causes the Bulk OUT endpoint to be nak'ed until the transfer is resumed by calling cld_sc57x_cdc_lib_resume_paused_serial_data_transfer.
	CLD_USB_TRANSFER_DISCARD	Requests that the CLD SC57x CDC Library discard the number f bytes specified in p_transfer_params->num_bytes. In this case the library accepts the Bulk OUT data from the USB Host but discards the data. This is similar to the concepts of frame dropping in audio/video applications.
	CLD_USB_TRANSFER_STALL	This notifies the CLD SC57x CDC Library that there is an error and the Bulk OUT endpoint should be stalled.

<i>fp_cdc_cmd_send_encapsulated_cmd</i>	<p>Pointer to the function that is called when a CDC Send Encapsulated Command request is received. This function a pointer to the CLD_USB_Transfer_Params structure ('p_transfer_data') as its parameters.</p> <p>The following CLD_USB_Transfer_Params structure elements are used to processed a Send Encapsulated Command transfer:</p>	
	Structure Element	Description
	num_bytes	The number of bytes from the Setup Packet wLength field, which is the number of bytes that will be transferred to p_data_buffer before calling the fp_usb_out_transfer_complete callback function.
p_data_buffer	Pointer to the data buffer to store the Send Encapsulated Command data. The size of the buffer should be greater than or equal to the value in num_bytes.	

	<i>fp_usb_out_transfer_complete</i>	Function called when num_bytes of data has been written to the p_data_buffer memory.									
	<i>fp_transfer_aborted_callback</i>	Function called if there is a problem receiving the data, or if the transfer is interrupted.									
	transfer_timeout_ms	Not used for Control Requests since the Host has the ability to interrupt any Control transfer.									
	The fp_cdc_cmd_send_encapsulated_cmd function returns the CLD_USB_Transfer_Request_Return_Type, which has the following values:										
	<table border="1"> <thead> <tr> <th>Return Value</th> <th>Description</th> </tr> </thead> <tbody> <tr> <td>CLD_USB_TRANSFER_ACCEPT</td> <td>Notifies the CLD SC57x CDC Library that the Send Encapsulated Command data should be accepted using the p_transfer_data values.</td> </tr> <tr> <td>CLD_USB_TRANSFER_PAUSE</td> <td>Requests that the CLD SC57x CDC Library pause the Set Report transfer. This causes the Control Endpoint to be nak'ed until the transfer is resumed by calling cld_sc57x_cdc_lib_resume_paused_control_transfer.</td> </tr> <tr> <td>CLD_USB_TRANSFER_DISCARD</td> <td>Requests that the CLD SC57x CDC Library discard the number of bytes specified in p_transfer_params->num_bytes. In this case the library accepts the Send Encapsulated Command from the USB Host but discards the data. This is similar to the concepts of frame dropping in audio/video applications.</td> </tr> <tr> <td>CLD_USB_TRANSFER_STALL</td> <td>This notifies the CLD SC57x CDC Library that there is an error and the request should be stalled.</td> </tr> </tbody> </table>		Return Value	Description	CLD_USB_TRANSFER_ACCEPT	Notifies the CLD SC57x CDC Library that the Send Encapsulated Command data should be accepted using the p_transfer_data values.	CLD_USB_TRANSFER_PAUSE	Requests that the CLD SC57x CDC Library pause the Set Report transfer. This causes the Control Endpoint to be nak'ed until the transfer is resumed by calling cld_sc57x_cdc_lib_resume_paused_control_transfer.	CLD_USB_TRANSFER_DISCARD	Requests that the CLD SC57x CDC Library discard the number of bytes specified in p_transfer_params->num_bytes. In this case the library accepts the Send Encapsulated Command from the USB Host but discards the data. This is similar to the concepts of frame dropping in audio/video applications.	CLD_USB_TRANSFER_STALL
Return Value	Description										
CLD_USB_TRANSFER_ACCEPT	Notifies the CLD SC57x CDC Library that the Send Encapsulated Command data should be accepted using the p_transfer_data values.										
CLD_USB_TRANSFER_PAUSE	Requests that the CLD SC57x CDC Library pause the Set Report transfer. This causes the Control Endpoint to be nak'ed until the transfer is resumed by calling cld_sc57x_cdc_lib_resume_paused_control_transfer.										
CLD_USB_TRANSFER_DISCARD	Requests that the CLD SC57x CDC Library discard the number of bytes specified in p_transfer_params->num_bytes. In this case the library accepts the Send Encapsulated Command from the USB Host but discards the data. This is similar to the concepts of frame dropping in audio/video applications.										
CLD_USB_TRANSFER_STALL	This notifies the CLD SC57x CDC Library that there is an error and the request should be stalled.										
<i>fp_cdc_cmd_get_encapsulated_resp</i>	Pointer to the function that is called when a CDC Get Encapsulated Response request is received. This function takes a pointer to the CLD_USB_Transfer_Params structure										

(p_transfer_data') as its parameters.

The following CLD_USB_Transfer_Params structure elements are used to processed a Get Encapsulated Response request:

Structure Element	Description
num_bytes	The number of bytes from the Setup Packet wLength field.
p_data_buffer	Pointer to the data buffer to source the Get Encapsulated Response data. The size of the buffer should be greater than or equal to the value in num_bytes.
<i>fp_usb_in_transfer_complete</i>	Function called when Get Encapsulated Response data has been transferred to the Host.
<i>fp_transfer_aborted_callback</i>	Function called if there is a problem transferring the data, or if the transfer is interrupted
transfer_timeout_ms	Not used for Control Requests since the Host has the ability to interrupt any Control transfer.

The fp_cdc_cmd_get_encapsulated_resp function returns the CLD_USB_Transfer_Request_Return_Type, which has the following values:

Return Value	Description
CLD_USB_TRANSFER_ACCEPT	Notifies the CLD SC57x CDC Library that the Get Encapsulated Response data should be transferred using the p_transfer_data values.
CLD_USB_TRANSFER_PAUSE	Requests that the CLD SC57x CDC Library pause the Get Encapsulated Response transfer. This causes the Control Endpoint to be nak'ed until the transfer is resumed by calling cld_sc57x_cdc_lib_resume_paused_control_transfer.
CLD_USB_TRANSFER_DISCARD	Requests that the CLD SC57x CDC Library to return a zero length packet in response to the Get

		Encapsulated Response request.																
	CLD_USB_TRANSFER_STALL	This notifies the CLD SC57x CDC Library that there is an error and the request should be stalled.																
<i>fp_cdc_cmd_set_line_coding</i>	<p>Pointer to the function that is called when a CDC Set Line Coding request is received. This function takes a pointer to the Host specified CLD_CDC_Line_Coding structure ('p_line_coding') as its parameters.</p> <p>The following CLD_CDC_Line_Coding structure elements are used to processed a Set Line Coding request:</p> <table border="1" data-bbox="669 632 1443 1178"> <thead> <tr> <th>Structure Element</th> <th>Description</th> </tr> </thead> <tbody> <tr> <td>data_terminal_rate</td> <td>Serial baud rate in bits per second.</td> </tr> <tr> <td>num_stop_bits</td> <td>CDC Number of stop bits. 0 = 1 stop bit 1 = 1.5 stop bits 2 = 2 stop bits.</td> </tr> <tr> <td>parity</td> <td>CDC parity setting 0 = None 1 = Odd 2 = Even 3 = Mark 4 = Space</td> </tr> <tr> <td>num_data_bits</td> <td>CDC Number of data bits (only 5, 6, 7, 8 and 16 are valid).</td> </tr> </tbody> </table> <p>The fp_cdc_cmd_set_line_coding function returns the CLD_USB_Data_Received_Return_Type, which has the following values:</p> <table border="1" data-bbox="669 1310 1443 1583"> <thead> <tr> <th>Return Value</th> <th>Description</th> </tr> </thead> <tbody> <tr> <td>CLD_USB_DATA_GOOD</td> <td>Notifies the CLD SC57x CDC Library that the request is valid.</td> </tr> <tr> <td>CLD_USB_DATA_BAD_STALL</td> <td>Notifies the CLD SC57x CDC Library that the request is invalid, and should be stalled.</td> </tr> </tbody> </table>		Structure Element	Description	data_terminal_rate	Serial baud rate in bits per second.	num_stop_bits	CDC Number of stop bits. 0 = 1 stop bit 1 = 1.5 stop bits 2 = 2 stop bits.	parity	CDC parity setting 0 = None 1 = Odd 2 = Even 3 = Mark 4 = Space	num_data_bits	CDC Number of data bits (only 5, 6, 7, 8 and 16 are valid).	Return Value	Description	CLD_USB_DATA_GOOD	Notifies the CLD SC57x CDC Library that the request is valid.	CLD_USB_DATA_BAD_STALL	Notifies the CLD SC57x CDC Library that the request is invalid, and should be stalled.
Structure Element	Description																	
data_terminal_rate	Serial baud rate in bits per second.																	
num_stop_bits	CDC Number of stop bits. 0 = 1 stop bit 1 = 1.5 stop bits 2 = 2 stop bits.																	
parity	CDC parity setting 0 = None 1 = Odd 2 = Even 3 = Mark 4 = Space																	
num_data_bits	CDC Number of data bits (only 5, 6, 7, 8 and 16 are valid).																	
Return Value	Description																	
CLD_USB_DATA_GOOD	Notifies the CLD SC57x CDC Library that the request is valid.																	
CLD_USB_DATA_BAD_STALL	Notifies the CLD SC57x CDC Library that the request is invalid, and should be stalled.																	
<i>fp_cdc_cmd_get_line_coding</i>	<p>Pointer to the function that is called when a CDC Get Line Coding request is received. This function takes a pointer to CLD_CDC_Line_Coding structure ('p_line_coding') as its parameters. The User firmware should set the p_line_coding structure values based on its active settings.</p> <p>The following CLD_CDC_Line_Coding structure elements are used to processed a Get Line Coding request:</p> <table border="1" data-bbox="669 1856 1443 1892"> <thead> <tr> <th>Structure Element</th> <th>Description</th> </tr> </thead> </table>		Structure Element	Description														
Structure Element	Description																	

	data_terminal_rate	Serial baud rate in bits per second.
	num_stop_bits	CDC Number of stop bits. 0 = 1 stop bit 1 = 1.5 stop bits 2 = 2 stop bits.
	parity	CDC parity setting 0 = None 1 = Odd 2 = Even 3 = Mark 4 = Space
	num_data_bits	CDC Number of data bits (only 5, 6, 7, 8 and 16 are valid).

The fp_cdc_cmd_get_line_coding function returns CLD_RV, which has the following values:

Return Value	Description
CLD_SUCCESS	Notifies the CLD SC57x CDC Library that the request is valid and the p_line_coding value should be returned to the Host.
CLD_FAIL	Notifies the CLD SC57x CDC Library that the request is invalid, and should be stalled.

fp_cdc_cmd_set_control_line_state

Pointer to the function that is called when a CDC Set Control Line State request is received. This function takes a pointer to the Host specified CLD_CDC_Control_Line_State structure ('p_control_line_state') as its parameters.

The following CLD_CDC_Control_Line_State structure elements are used to processed a Set Control Line State request:

Structure Element	Description
dte_present	Controls if the DTE is present or not. This corresponds to the RS-232 DTR signal. 0 = Not Present 1 = Present
activate_carrier	Carrier control used in half duplex serial links. This signal corresponds to the RS-232 RTS signal. 0 = Disabled 1 = Active

The fp_cdc_cmd_set_control_line_state function returns the

	<p>CLD_USB_Data_Received_Return_Type, which has the following values:</p> <table border="1"> <thead> <tr> <th>Return Value</th> <th>Description</th> </tr> </thead> <tbody> <tr> <td>CLD_USB_DATA_GOOD</td> <td>Notifies the CLD SC57x CDC Library that the request is valid.</td> </tr> <tr> <td>CLD_USB_DATA_BAD_STALL</td> <td>Notifies the CLD SC57x CDC Library that the request is invalid, and should be stalled.</td> </tr> </tbody> </table>	Return Value	Description	CLD_USB_DATA_GOOD	Notifies the CLD SC57x CDC Library that the request is valid.	CLD_USB_DATA_BAD_STALL	Notifies the CLD SC57x CDC Library that the request is invalid, and should be stalled.
Return Value	Description						
CLD_USB_DATA_GOOD	Notifies the CLD SC57x CDC Library that the request is valid.						
CLD_USB_DATA_BAD_STALL	Notifies the CLD SC57x CDC Library that the request is invalid, and should be stalled.						
<i>fp_cdc_cmd_send_break</i>	<p>Pointer to the function that is called when a CDC Send Break request is received. This function takes the host specified duration in milliseconds ('duration') as its parameters.</p> <p>The <i>fp_cdc_cmd_send_break</i> function returns the CLD_USB_Data_Received_Return_Type, which has the following values:</p> <table border="1"> <thead> <tr> <th>Return Value</th> <th>Description</th> </tr> </thead> <tbody> <tr> <td>CLD_USB_DATA_GOOD</td> <td>Notifies the CLD SC57x CDC Library that the request is valid.</td> </tr> <tr> <td>CLD_USB_DATA_BAD_STALL</td> <td>Notifies the CLD SC57x CDC Library that the request is invalid, and should be stalled.</td> </tr> </tbody> </table>	Return Value	Description	CLD_USB_DATA_GOOD	Notifies the CLD SC57x CDC Library that the request is valid.	CLD_USB_DATA_BAD_STALL	Notifies the CLD SC57x CDC Library that the request is invalid, and should be stalled.
Return Value	Description						
CLD_USB_DATA_GOOD	Notifies the CLD SC57x CDC Library that the request is valid.						
CLD_USB_DATA_BAD_STALL	Notifies the CLD SC57x CDC Library that the request is invalid, and should be stalled.						
support_cdc_network_connection	<p>Tells the CLD SC57x CDC Library if the User firmware supports the CDC Network Connection Notification.</p> <p>0 = Not supported 1 = Supported</p>						
cdc_class_bcd_version	<p>CDC Class Version in BCD. Returned in the CDC Header Functional Descriptor's bcdCDC field. (refer to the CDC specification v1.2 section 5.3.2.1).</p>						
cdc_class_control_protocol_code	<p>Value used in the CDC interface descriptor's bInterfaceProtocol field. The valid CDC Protocol codes are defined in the CDC v.1.2 specification in Table 5 on page 13.</p>						
p_usb_string_manufacturer	<p>Pointer to the null-terminated string. This string is used by the CLD SC57x CDC Library to generate the Manufacturer USB String Descriptor. If the Manufacturer String Descriptor is not used set <i>p_usb_string_manufacturer</i> to CLD_NULL.</p>						
p_usb_string_product	<p>Pointer to the null-terminated string. This string is used by the CLD SC57x CDC Library to generate the Product USB String Descriptor. If the Product String Descriptor is not used set <i>p_usb_string_product</i> to CLD_NULL.</p>						
p_usb_string_serial_number	<p>Pointer to the null-terminated string. This string is used by the CLD SC57x CDC Library to generate the Serial Number USB String Descriptor. If the Serial Number String Descriptor is not used set <i>p_usb_string_serial_number</i> to CLD_NULL.</p>						
p_usb_string_configuration	<p>Pointer to the null-terminated string. This string is used by the CLD SC57x CDC Library to generate the Configuration USB String Descriptor. If the Configuration String Descriptor is not</p>						

	used set <code>p_usb_string_configuration</code> to <code>CLD_NULL</code> .												
<code>p_usb_string_communication_class_interface</code>	Pointer to the null-terminated string. This string is used by the CLD SC57x CDC Library to generate the CDC Interface USB String Descriptor. If the CDC Interface String Descriptor is not used set <code>p_usb_string_communication_class_interface</code> to <code>CLD_NULL</code> .												
<code>p_usb_string_data_class_interface</code>	Pointer to the null-terminated string. This string is used by the CLD SC57x CDC Library to generate the Data Class Interface USB String Descriptor. If the Data Interface String Descriptor is not used set <code>p_usb_string_data_class_interface</code> to <code>CLD_NULL</code> .												
<code>usb_string_language_id</code>	16-bit USB String Descriptor Language ID Code as defined in the USB Language Identifiers (LANGIDs) document (www.usb.org/developers/docs/USB_LANGIDs.pdf). 0x0409 = English (United States)												
<code>fp_cld_usb_event_callback</code>	<p>Function that is called when one of the following USB events occurs. This function has a single <code>CLD_USB_Event</code> parameter.</p> <p>Note: This callback can be called from the USB interrupt or mainline context depending on which USB event was detected. The <code>CLD_USB_Event</code> values in the table below are highlighted to show the context the callback is called for each event.</p> <p>The <code>CLD_USB_Event</code> has the following values:</p> <table border="1"> <thead> <tr> <th>Return Value</th> <th>Description</th> </tr> </thead> <tbody> <tr> <td><code>CLD_USB_CABLE_CONNECTED</code></td> <td>USB Cable Connected.</td> </tr> <tr> <td><code>CLD_USB_CABLE_DISCONNECTED</code></td> <td>USB Cable Disconnected</td> </tr> <tr> <td><code>CLD_USB_ENUMERATED_CONFIGURED</code></td> <td>USB device enumerated (USB Configuration set to a non-zero value)</td> </tr> <tr> <td><code>CLD_USB_UN_CONFIGURED</code></td> <td>USB Configuration set to 0</td> </tr> <tr> <td><code>CLD_USB_BUS_RESET</code></td> <td>USB Bus reset received</td> </tr> </tbody> </table> <p>Note: Set to <code>CLD_NULL</code> if not required by application</p>	Return Value	Description	<code>CLD_USB_CABLE_CONNECTED</code>	USB Cable Connected.	<code>CLD_USB_CABLE_DISCONNECTED</code>	USB Cable Disconnected	<code>CLD_USB_ENUMERATED_CONFIGURED</code>	USB device enumerated (USB Configuration set to a non-zero value)	<code>CLD_USB_UN_CONFIGURED</code>	USB Configuration set to 0	<code>CLD_USB_BUS_RESET</code>	USB Bus reset received
Return Value	Description												
<code>CLD_USB_CABLE_CONNECTED</code>	USB Cable Connected.												
<code>CLD_USB_CABLE_DISCONNECTED</code>	USB Cable Disconnected												
<code>CLD_USB_ENUMERATED_CONFIGURED</code>	USB device enumerated (USB Configuration set to a non-zero value)												
<code>CLD_USB_UN_CONFIGURED</code>	USB Configuration set to 0												
<code>CLD_USB_BUS_RESET</code>	USB Bus reset received												
<code>fp_cld_lib_status</code>	<p>Pointer to the function that is called when the CLD library has a status to report. This function has the following parameters:</p> <table border="1"> <thead> <tr> <th>Parameter</th> <th>Description</th> </tr> </thead> <tbody> <tr> <td><code>status_code</code></td> <td>16-bit status code. If the most significant bit is a '1' the status being reported is an Error.</td> </tr> <tr> <td><code>p_additional_data</code></td> <td>Pointer to additional data included with the status.</td> </tr> <tr> <td><code>additional_data_size</code></td> <td>The number of bytes in the specified additional data.</td> </tr> </tbody> </table> <p>If the User plans on processing outside of the <code>fp_cld_lib_status</code> function they will need to copy the additional data to a User buffer.</p>	Parameter	Description	<code>status_code</code>	16-bit status code. If the most significant bit is a '1' the status being reported is an Error.	<code>p_additional_data</code>	Pointer to additional data included with the status.	<code>additional_data_size</code>	The number of bytes in the specified additional data.				
Parameter	Description												
<code>status_code</code>	16-bit status code. If the most significant bit is a '1' the status being reported is an Error.												
<code>p_additional_data</code>	Pointer to additional data included with the status.												
<code>additional_data_size</code>	The number of bytes in the specified additional data.												

cld_sc57x_cdc_lib_main

void cld_sc57x_cdc_lib_main (void)

CLD SC57x CDC Library mainline function

Arguments

None

Return Value

None.

Details

The `cld_sc57x_cdc_lib_main` function is the CLD SC57x CDC Library mainline function which must be called in every iteration of the main program loop in order for the library to function properly.

cld_sc57x_cdc_lib_transmit_serial_data

CLD_USB_Data_Transmit_Return_Type **cld_sc57x_cdc_lib_transmit_serial_data**
(CLD_USB_Transfer_Params * p_transfer_data)

CLD SC57x CDC Library function used to send serial over the Bulk IN endpoint.

Arguments

p_transfer_data	Pointer to a CLD_USB_Transfer_Params structure used to describe the data being transmitted.
-----------------	---

Return Value

This function returns the CLD_USB_Data_Transmit_Return_Type type which reports if the Bulk IN transmission request was started. The CLD_USB_Data_Transmit_Return_Type type has the following values:

CLD_USB_TRANSMIT_SUCCESSFUL	The library has started the requested Bulk IN transfer.
CLD_USB_TRANSMIT_FAILED	The library failed to start the requested Bulk IN transfer. This will happen if the Bulk IN endpoint is busy, or if the p_transfer_data-> data_buffer is set to NULL

Details

The cld_sc57x_cdc_lib_transmit_serial_data function transmits the data specified by the p_transfer_data parameter to the USB Host using the Device's Bulk IN endpoint.

The CLD_USB_Transfer_Params structure is described below.

typedef struct

```
{  
    unsigned long num_bytes;  
    unsigned char * p_data_buffer;  
    union  
    {  
        CLD_USB_Data_Received_Return_Type (*fp_usb_out_transfer_complete) (void);  
        void (*fp_usb_in_transfer_complete) (void);  
    }callback;  
    void (*fp_transfer_aborted_callback) (void);  
    void transfer_timeout_ms;  
} CLD_USB_Transfer_Params;
```

A description of the CLD_USB_Transfer_Params structure elements is included below:

Structure Element	Description
num_bytes	The number of bytes to transfer to the USB Host. Once the specified number of bytes have been transmitted the usb_in_transfer_complete callback function will be called.
p_data_buffer	Pointer to the data to be sent to the USB Host. This buffer must include the number of bytes specified by num_bytes.
fp_usb_out_transfer_complete	Not Used for Bulk IN transfers

<i>fp_usb_in_transfer_complete</i>	Function called when the specified data has been transmitted to the USB host. This function pointer can be set to CLD_NULL if the User application doesn't want to be notified when the data has been transferred.
<i>fp_transfer_aborted_callback</i>	Function called if there is a problem transmitting the data to the USB Host. This function can be set to CLD_NULL if the User application doesn't want to be notified if a problem occurs.
transfer_timeout_ms	USB transfer timeout in milliseconds. If the Bulk IN transfer takes longer then this timeout the transfer is aborted and the fp_transfer_aborted_callback is called. Setting the timeout to 0 disables the timeout

cld_sc57x_cdc_lib_send_network_connection_state

CLD_USB_Data_Transmit_Return_Type **cld_sc57x_cdc_lib_send_network_connection_state**
(CLD_SC57x_CDC_Lib_Network_Connection_State state)

CLD SC57x CDC Library function used to send the CDC Network Connection Notification using the Interrupt IN endpoint.

Arguments

state	The Network Connection state to send to the Host.
-------	---

Return Value

This function returns the CLD_USB_Data_Transmit_Return_Type type which reports if the Interrupt IN transmission request was started. The CLD_USB_Data_Transmit_Return_Type type has the following values:

CLD_USB_TRANSMIT_SUCCESSFUL	The library has started the requested Interrupt IN transfer.
CLD_USB_TRANSMIT_FAILED	The library failed to start the requested Interrupt IN transfer. This will happen if the Interrupt IN endpoint is busy, or if the p_transfer_data->data_buffer is set to NULL

Details

The cld_sc57x_cdc_lib_send_network_connection_state function transmits the network connection state specified by the state parameter to the USB Host using the Device's Interrupt IN endpoint.

The CLD_SC57x_CDC_Lib_Network_Connection_State enum values are listed below.

Enum Element	Description
CLD_CDC_NETWORK_DISCONNECTED	The CDC Network is disconnected.
CLD_CDC_NETWORK_CONNECTED	The CDC Network is connected.

cld_sc57x_cdc_lib_send_response_available

CLD_USB_Data_Transmit_Return_Type **cld_sc57x_cdc_lib_send_response_available**
(CLD_SC57x_CDC_Lib_Network_Connection_State state)

CLD SC57x CDC Library function used to send the CDC Response Available Notification using the Interrupt IN endpoint.

Arguments

None.

Return Value

This function returns the CLD_USB_Data_Transmit_Return_Type type which reports if the Interrupt IN transmission request was started. The CLD_USB_Data_Transmit_Return_Type type has the following values:

CLD_USB_TRANSMIT_SUCCESSFUL	The library has started the requested Interrupt IN transfer.
CLD_USB_TRANSMIT_FAILED	The library failed to start the requested Interrupt IN transfer. This will happen if the Interrupt IN endpoint is busy, or if the p_transfer_data->data_buffer is set to NULL

Details

The cld_sc57x_cdc_lib_send_response_available function transmits the CDC Response Available Notification to the USB Host using the Device's Interrupt IN endpoint. The Host can then request the response data using a Send Encapsulated Response Control endpoint request.

cld_sc57x_cdc_lib_send_serial_state

CLD_USB_Data_Transmit_Return_Type **cld_sc57x_cdc_lib_send_serial_state**
(CLD_CDC_Serial_State * p_serial_state)

CLD SC57x CDC Library function used to send the CDC Serial State Notification using the Interrupt IN endpoint.

Arguments

p_serial_state	Pointer to a CLD_CDC_Serial_State structure used to report the current state of the emulated serial port to the USB Host.
----------------	---

Return Value

This function returns the CLD_USB_Data_Transmit_Return_Type type which reports if the Interrupt IN transmission request was started. The CLD_USB_Data_Transmit_Return_Type type has the following values:

CLD_USB_TRANSMIT_SUCCESSFUL	The library has started the requested Interrupt IN transfer.
CLD_USB_TRANSMIT_FAILED	The library failed to start the requested Interrupt IN transfer. This will happen if the Interrupt IN endpoint is busy, or if the p_transfer_data->data_buffer is set to NULL

Details

The cld_sc57x_cdc_lib_send_serial_data function transmits the current CDC Serial State specified by the p_serial_state parameter to the USB Host using the Device's Interrupt IN endpoint.

The CLD CLD_CDC_Serial_State structure is described below.

```
typedef struct
{
    union
    {
        struct
        {
            unsigned short rx_carrier      : 1;
            unsigned short tx_carrier      : 1;
            unsigned short break_detect    : 1;
            unsigned short ring_signal     : 1;
            unsigned short framing_error    : 1;
            unsigned short parity_error    : 1;
            unsigned short rx_data_overrun : 1;
            unsigned short reserved       : 9;
        } bits;
        unsigned short state;
    } u;
} CLD_CDC_Serial_State;
```

A description of the CLD_CDC_Serial_State structure elements is included below:

Structure Element	Description
rx_carrier	State of receiver carrier detection mechanism of device. This signal corresponds to V.24 signal 109 and RS-232 signal DCD.
tx_carrier	State of transmission carrier. This signal corresponds to V.24 signal 106 and RS-232 signal DSR.
break_detect	State of break detection mechanism of the device.
ring_signal	State of ring signal detection of the device.
framing_error	A framing error has occurred.
parity_error	A parity error has occurred.
rx_data_overrun	Received data has been discarded due to overrun in the device.

Once the Serial State Notification has been sent the device re-evaluates the above fields. For the tx_carrier and rx_carrier the Serial State Notification is sent when these signals change. For the remaining fields once the Serial State Notification has been sent their value is reset to zero, and will be sent to the Host again when the field is set to a '1'.

cld_sc57x_cdc_lib_resume_paused_serial_data_transfer

```
void cld_sc57x_cdc_lib_resume_paused_resume_serial_data_transfer (void)
```

CLD SC57x CDC Library function used to resume a paused Serial Data Bulk OUT transfer.

Arguments

None

Return Value

None.

Details

The cld_sc57x_cdc_lib_resume_paused_serial_data_transfer function is used to resume a Bulk OUT transfer that was paused by the fp_serial_data_received function returning CLD_USB_TRANSFER_PAUSE. When called the cld_sc57x_cdc_lib_resume_paused_serial_data_transfer function will call the User application's fp_serial_data_received function passing the CLD_USB_Transfer_Params of the original paused transfer. The fp_serial_data_received function can then chose to accept, discard, or stall the Bulk OUT request.

cld_sc57x_cdc_lib_resume_paused_control_transfer

```
void cld_sc57x_cdc_lib_resume_paused_control_transfer (void)
```

CLD SC57x CDC Library function used to resume a paused Control endpoint transfer.

Arguments

None

Return Value

None.

Details

The `cld_sc57x_cdc_lib_resume_paused_control_transfer` function is used to resume a Control transfer that was paused by the `fp_cdc_cmd_send_encapsulated_cmd` or `fp_cdc_cmd_get_encapsulated_resp` function returning `CLD_USB_TRANSFER_PAUSE`. When called the `cld_sc57x_cdc_lib_resume_paused_control_transfer` function will call the User application's `fp_cdc_cmd_send_encapsulated_cmd` or `fp_cdc_cmd_get_encapsulated_resp` function passing the `CLD_USB_Transfer_Params` of the original paused transfer. The User function can then chose to accept, discard, or stall the Control endpoint request.

cld_lib_usb_connect

void cld_lib_usb_connect (void)

CLD SC57x CDC Library function used to connect to the USB Host.

Arguments

None

Return Value

None.

Details

The `cld_lib_usb_connect` function is called after the CLD SC57x CDC Library has been initialized to connect the USB device to the Host.

cld_lib_usb_disconnect

void cld_lib_usb_disconnect (void)

CLD SC57x CDC Library function used to disconnect from the USB Host.

Arguments

None

Return Value

None.

Details

The `cld_lib_usb_disconnect` function is called after the CLD SC57x CDC Library has been initialized to disconnect the USB device to the Host.

cld_time_125us_tick

```
void cld_time_125us_tick (void)
```

CLD Audio 2.0 w/CDC Library timer function that should be called once per 125 microseconds.

Arguments

None

Return Value

None.

Details

This function should be called once every 125 microseconds in order to the CLD to processed periodic events.

cld_usb0_isr_callback & cld_usb1_isr_callback

```
void cld_usb0_isr_callback (void)
```

```
void cld_usb1_isr_callback (void)
```

CLD Audio 2.0 w/CDC Library USB interrupt service routines

Arguments

None

Return Value

None.

Details

These USB ISR functions should be called from the corresponding SC57x USB Port Interrupt Service Routines as shown in the CLD provided example projects.

cld_time_get

```
CLD_Time cld_time_get(void)
```

CLD SC57x CDC Library function used to get the current CLD time.

Arguments

None

Return Value

The current CLD library time.

Details

The `cld_time_get` function is used in conjunction with the `cld_time_passed_ms` function to measure how much time has passed between the `cld_time_get` and the `cld_time_passed_ms` function calls.

`cld_time_passed_ms`

CLD_Time `cld_time_passed_ms`(CLD_Time time)

CLD SC57x CDC Library function used to measure the amount of time that has passed.

Arguments

time	A CLD_Time value returned by a <code>cld_time_get</code> function call.
------	---

Return Value

The number of milliseconds that have passed since the `cld_time_get` function call that returned the CLD_Time value passed to the `cld_time_passed_ms` function.

Details

The `cld_time_passed_ms` function is used in conjunction with the `cld_time_get` function to measure how much time has passed between the `cld_time_get` and the `cld_time_passed_ms` function calls.

If a one millisecond resolution is granular enough for your needs, you can have a virtually unlimited number of timed events when using `cld_time_get` and `cld_time_passed_ms`.

`cld_time_get_125us`

CLD_Time `cld_time_get_125us`(void)

CLD SC57x Audio 2.0 with CDC Library function used to get the current CLD time in 125 microsecond increments.

Arguments

None

Return Value

The current CLD library time.

Details

The `cld_time_get_125us` function is used in conjunction with the `cld_time_passed_125us` function to measure how much time has passed between the `cld_time_get_125us` and the `cld_time_passed_125us` function calls in 125 microsecond increments.

cld_time_passed_125us

CLD_Time **cld_time_passed_125us**(CLD_Time time)

CLD SC57x Audio 2.0 with CDC Library function used to measure the amount of time that has passed in 125 microsecond increments.

Arguments

time	A CLD_Time value returned by a cld_time_get_125us function call.
------	---

Return Value

The number of 125microsecond increments that have passed since the **cld_time_get_125us** function call that returned the CLD_Time value passed to the **cld_time_passed_125us** function.

Details

The **cld_time_passed_125us** function is used in conjunction with the **cld_time_get_125us** function to measure how much time has passed between the **cld_time_get_125us** and the **cld_time_passed_125us** function calls in 125 microsecond increments.

cld_lib_status_decode

char * cld_lib_status_decode (**unsigned short** status_cod,
void * p_additional_data,
unsigned short additional_data_size)

CLD Library function that returns a NULL terminated string describing the status passed to the function.

Arguments

status_code	16-bit status code returned by the CLD library. Note: If the most significant bit is a '1' the status is an error.
p_additional_data	Pointer to the additional data returned by the CLD library (if any).
additional_data_size	Size of the additional data returned by the CLD library.

Return Value

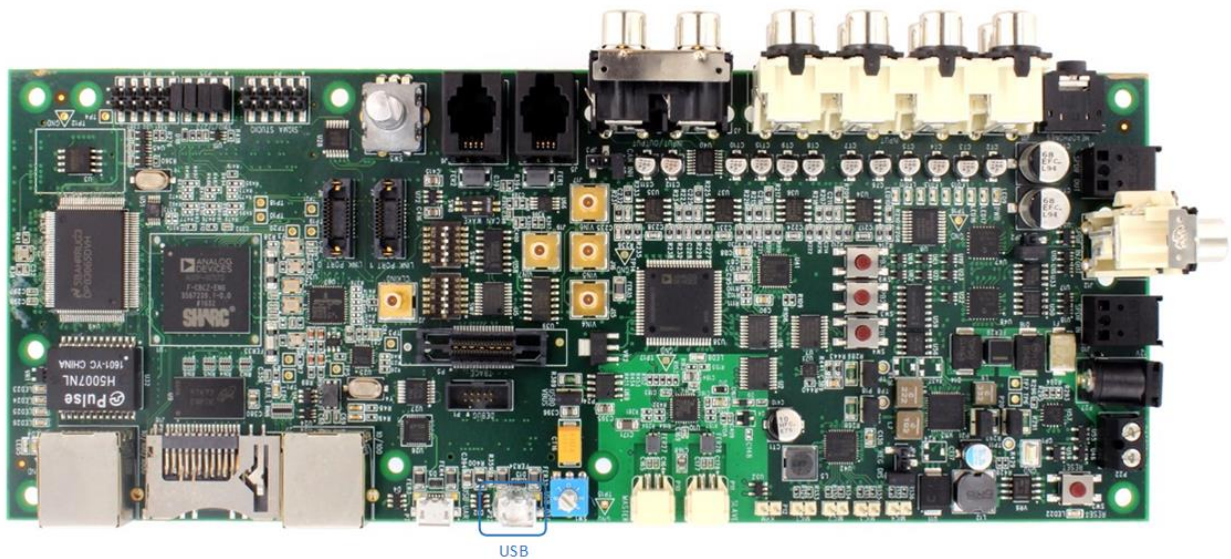
This function returns a decoded Null terminated ASCII string.

Details

The `cld_lib_status_decode` function can be used to generate an ASCII string which describes the CLD library status passed to the function. The resulting string can be used by the User to determine the meaning of the status codes returned by the CLD library.

Using the ADSP-SC573 Ez-Board

Connections:



Adding the CLD SC57x CDC Library to an Existing CrossCore Embedded Studio Project

In order to include the CLD SC57x CDC Library in a CrossCore Embedded Studio (CCES) project you must configure the project linker settings so it can locate the library. The following steps outline how this is done.

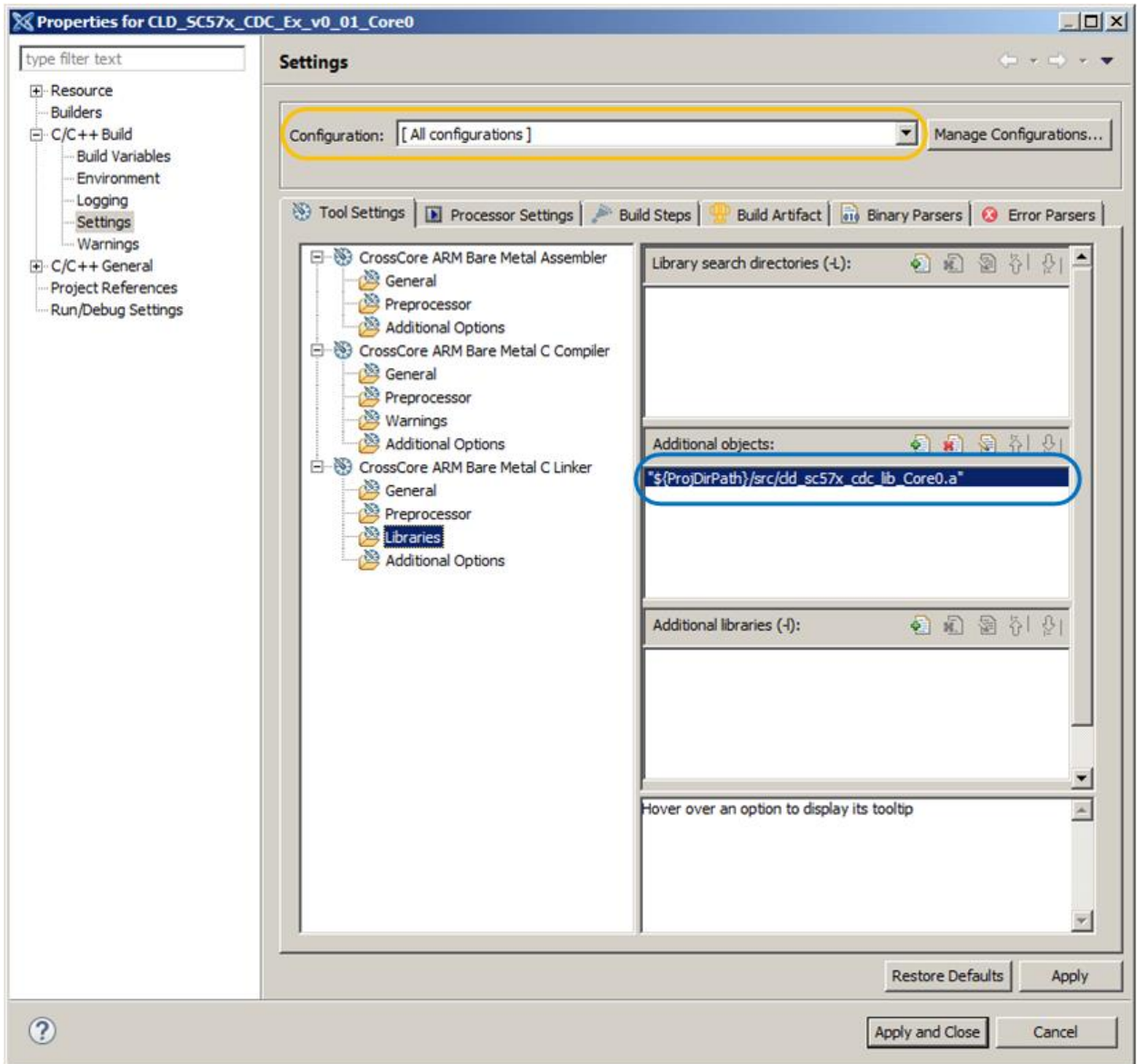
1. Copy the `cld_sc57x_cdc_lib.h` and `cld_sc57x_cdc_lib_Core0.a` files to the project's `src` directory.
2. Open the project in CrossCore Embedded Studio.
3. Right click the project in the 'C/C++ Projects' window and select Properties.

If you cannot find the 'C/C++ Projects' window make sure C/C++ Perspective is active. If the C/C++ Perspective is active and you still cannot locate the 'C/C++ Projects' window select Window → Show View → C/C++ Projects.

4. You should now see a project properties window similar to the one shown below.

Navigate to the C/C++ Build → Settings page and select the CrossCore ARM Bare Metal C Linker's Libraries page. The CLD SC57x CDC Library needs to be included in the projects 'Additional objects' as shown in the diagram below (circled in blue). This lets the linker know

where the `cld_sc57x_cdc_lib_Core0.a` file is located.



5. The 'Additional objects' setting needs to be set for all configurations (Debug, Release, etc). This can be done individually for each configuration, or all at once by selecting the [All Configurations] option as shown in the previous figure (circled in orange).

User Firmware Code Snippets

The following code snippets are not complete, and are meant to be a starting point for the User firmware. For a functional User firmware example that uses the CLD SC57x CDC Library please refer to the CLD CDC Example v1.00 project included with the CLD SC57x CDC Library. The CLD CDC Example v1.00 project implements a basic USB to Serial device using the CDC Abstract Model Class Serial Emulation protocol.

main.c

```
void main(void)
{
    Main_States main_state = MAIN_STATE_SYSTEM_INIT;

    while (1)
    {
        switch (main_state)
        {
            case MAIN_STATE_SYSTEM_INIT:
                /* Initialize the SC573 clock, and power systems.*/
                main_state = MAIN_STATE_USER_INIT;
                break;
            case MAIN_STATE_USER_INIT:
                rv = user_cdc_init();
                if (rv == USER_CDC_INIT_SUCCESS)
                {
                    main_state = MAIN_STATE_RUN;
                }
                else if (rv == USER_CDC_INIT_FAILED)
                {
                    main_state = MAIN_STATE_ERROR;
                }
                break;
            case MAIN_STATE_RUN:
                user_cdc_main();
                break;
            case MAIN_STATE_ERROR:
                break;
        }
    }
}
```

user_cdc.c

```
/* CDC Notification Interrupt IN endpoint parameters. */
static CLD_SC57x_CDC_Notification_Endpoint_Params user_cdc_notification_ep_params =
{
    .endpoint_number           = 1,
    .max_packet_size_full_speed = 64,
    .polling_interval_full_speed = 1,
    .max_packet_size_high_speed = 64,
    .polling_interval_high_speed = 4, /* 1ms */
};

/* CDC Serial Data Bulk OUT endpoint parameters. */
static CLD_Serial_Data_Bulk_Endpoint_Params user_cdc_serial_data_rx_ep_params =
{
    .endpoint_number           = 2,
    .max_packet_size_full_speed = 64,
    .max_packet_size_high_speed = 512,
};

/* CDC Serial Data Bulk IN endpoint parameters. */
static CLD_Serial_Data_Bulk_Endpoint_Params user_cdc_serial_data_tx_ep_params =
{
    .endpoint_number           = 2,
    .max_packet_size_full_speed = 64,
    .max_packet_size_high_speed = 512,
};

/* CLD SC57x CDC Library initialization data. */
static CLD_SC57x_CDC_Lib_Init_Params user_cdc_init_params =
{
    .enable_dma = CLD_TRUE, /* USB DMA enabled */
    .vendor_id   = 0x064b,
    .product_id  = 0x0003,

    .usb_bus_max_power = 0,
    .device_descriptor_bcdDevice = 0x0100, /* Set USB Device Descriptor
                                             firmware version to 1.00 */

    /* Pointer to the serial data rx bulk endpoint parameters. */
    .p_serial_data_rx_endpoint_params = &user_cdc_serial_data_rx_ep_params,
    /* Pointer to the serial data tx bulk endpoint parameters. */
    .p_serial_data_tx_endpoint_params = &user_cdc_serial_data_tx_ep_params,
    /* Pointer to the CDC notification endpoint parameters. */
    .p_notification_endpoint_params = &user_cdc_notification_ep_params,

    /* Function called when serial data is received. */
    .fp_serial_data_received = user_cdc_serial_data_received,
    /* Function called when a CDC Send Encapsulated Command request is received */
    .fp_cdc_cmd_send_encapsulated_cmd = user_cdc_cmd_send_encapsulated_cmd,
    /* Function called when a CDC Get Encapsulated Command request is received */
    .fp_cdc_cmd_get_encapsulated_resp = user_cdc_cmd_get_encapsulated_resp,
    /* Function called when a CDC Set Line Coding request is received */
    .fp_cdc_cmd_set_line_coding = user_cdc_cmd_set_line_coding,
    /* Function called when a CDC Get Line Coding request is received */
    .fp_cdc_cmd_get_line_coding = user_cdc_cmd_get_line_coding,
    /* Function called when a CDC Set Control Line request is received */
    .fp_cdc_cmd_set_control_line_state = user_cdc_cmd_set_control_line_state,
    /* Function called when a CDC Send Break request is received */
    .fp_cdc_cmd_send_break = user_cdc_cmd_send_break,

    .support_cdc_network_notification = 1
};
```

```
.cdc_class_bcd_version          = 0x0120,          /* CDC Version 1.2 */
.cdc_class_control_protocol_code = 0,

/* USB string descriptors - Set to CLD_NULL if not required */
.p_usb_string_manufacturer     = "Analog Devices Inc",
.p_usb_string_product          = "Example CDC",
.p_usb_string_serial_number    = CLD_NULL,
.p_usb_string_configuration    = CLD_NULL,
.p_usb_string_communication_class_interface = "SC573 CDC Interface",
.p_usb_string_data_class_interface = "SC573 CDC Data",

.usb_string_language_id       = 0x0409,          /* English (US) language ID */

.fp_cld_usb_event_callback    = user_cdc_usb_event,

/* Function called when the CLD library reports a status. */
.fp_cld_lib_status            = user_cld_lib_status,
};
```



```

typedef enum
{
    USER_CDC_INIT_SUCCESS = 0,
    USER_CDC_INIT_ONGOING,
    USER_CDC_INIT_FAILED,
} User_CDC_Init_Return_Code;

User_CDC_Init_Return_Code user_cdc_init (void)
{
    static unsigned char user_init_state = 0;
    CLD_RV cld_rv = CLD_ONGOING;
    User_CDC_Init_Return_Code init_return_code = USER_CDC_INIT_ONGOING;

    switch (user_init_state)
    {
        case 0:

            /* TODO: add any custom User firmware initialization */

            user_init_state++;
            break;
        case 1:
            /* Initialize the CLD SC57x CDC Library */
            cld_rv = cld_sc57x_cdc_lib_init(&user_cdc_init_params);

            if (cld_rv == CLD_SUCCESS)
            {
                /* Connect to the USB Host */
                cld_lib_usb_connect();

                init_return_code = USER_CDC_INIT_SUCCESS;
            }
            else if (cld_rv == CLD_FAIL)
            {
                init_return_code = USER_CDC_INIT_FAILED;
            }
            else
            {
                init_return_code = USER_CDC_INIT_ONGOING;
            }
        }
    return init_return_code;
}

void user_cdc_main (void)
{
    cld_sc57x_cdc_lib_main();
}

```

```

/* Function called when a Serial Data Bulk OUT packet is received */
static CLD_USB_Transfer_Request_Return_Type
    user_cdc_serial_data_received (CLD_USB_Transfer_Params * p_transfer_data)
{
    p_transfer_data->num_bytes = /* TODO: Set number of Bulk OUT bytes to
                                transfer */
    p_transfer_data->p_data_buffer = /* TODO: address to store Bulk OUT data */

    /* User Interrupt transfer complete callback function. */
    p_transfer_data->callback.usb_out_transfer_complete =
        user_cdc_serial_data_out_transfer_done;
    p_transfer_params->fp_transfer_aborted_callback = /* TODO: Set to User callback
                                                    function or CLD_NULL */
    p_transfer_params->transfer_timeout_ms = /* TODO: Set to desired timeout or 0 to
                                            disable the timeout. */

    /* TODO: Return how the Bulk OUT transfer should be handled (Accept, Pause,
        Discard, or Stall */
}

/* The function below is an example of the Bulk OUT transfer done callback
specified in the CLD_USB_Transfer_Params structure. */
static CLD_USB_Data_Received_Return_Type user_cdc_serial_data_out_transfer_done (void)
{
    /* TODO: Process the received Bulk OUT transfer and return if the received data is
        good (CLD_USB_DATA_GOOD) or if there is an error (CLD_USB_DATA_BAD_STALL)*/
}

/* Function called when a Send Encapsulated Command request is received */
static CLD_USB_Transfer_Request_Return_Type user_cdc_cmd_send_encapsulated_cmd
    (CLD_USB_Transfer_Params * p_transfer_data)
{
    p_transfer_data->p_data_buffer = /* TODO: address to store data */
    p_transfer_data->callback.usb_out_transfer_complete =
        user_cdc_send_encapsulated_cmd_transfer_complete;
    p_transfer_data->fp_transfer_aborted_callback = /* TODO: Set to User callback
                                                    function or CLD_NULL
*/
    /* TODO: Return how the Control transfer should be handled (Accept, Pause,
        Discard, or Stall */
}

/* Function called when the Send Encapsulated Command data is received */
static CLD_USB_Data_Received_Return_Type
    user_cdc_send_encapsulated_cmd_transfer_complete (void)
{
    /* TODO: Return if the received data is good (CLD_USB_DATA_GOOD) or bad
        (CLD_USB_DATA_BAD_STALL) */
}

```

```

/* Function called when a Get Encapsulated Response request is received */
static CLD_USB_Transfer_Request_Return_Type user_cdc_cmd_get_encapsulated_resp
(CLD_USB_Transfer_Params * p_transfer_data)
{
    p_transfer_data->num_bytes = /* TODO: Set to size of response */
    p_transfer_data->p_data_buffer = /* TODO: address to source the response data */
    p_transfer_data->callback.usb_in_transfer_complete =
        user_cdc_get_encapsulated_resp_transfer_complete;
    p_transfer_data->fp_transfer_aborted_callback = /* TODO: Set to User callback
        function or NULL */
        /* TODO: Return how the Control transfer should be handled (Accept, Pause,
        Discard, or Stall */
}

/* Function called when a Get Encapsulated Response has been transmitted */
static void user_cdc_get_encapsulated_resp_transfer_complete (void)
{
    /* TODO: The Get Encapsulated Response data has been sent to the Host, add any
    User functionality. */
}

/* Function called when a Set Line Coding Request has been received*/
CLD_USB_Data_Received_Return_Type user_cdc_cmd_set_line_coding
(CLD_CDC_Line_Coding * p_line_coding)
{
    if ( /* TODO: Check if CDC Line Coding is valid */ )
    {
        /* TODO: Save the requested CDC Line Coding and process it accordingly */
        return CLD_USB_DATA_GOOD;
    }
    else
    {
        return CLD_USB_DATA_BAD_STALL;
    }
}

/* Function called when a Get Line Coding Request has been received*/
CLD_RV user_cdc_cmd_get_line_coding (CLD_CDC_Line_Coding * p_line_coding)
{
    if ( /* TODO: Check if Get CDC Line Coding request is valid */ )
    {
        /* TODO: Copy the current CDC Line Coding into the p_line_coding structure */
        return CLD_SUCCESS;
    }
    else
    {
        return CLD_FAIL;
    }
}

```

```

/* Function called when a CDC Set Control Line State Request has been received*/
CLD_USB_Data_Received_Return_Type user_cdc_cmd_set_control_line_state
    (CLD_CDC_Control_Line_State * p_control_line_state)
{
    if ( /* TODO: Check if CDC Control Line state is valid */ )
    {
        /* TODO: Process the CDC Control Line State */
        return CLD_USB_DATA_GOOD;
    }
    else
    {
        return CLD_USB_DATA_BAD_STALL;
    }
}

/* Function called when a CDC Send Break Request has been received*/
static void user_cdc_cmd_send_break (unsigned short duration)
{
    /* TODO: Process the requested break duration */
}

static void user_cdc_usb_event (CLD_USB_Event event)
{
    switch (event)
    {
        case CLD_USB_CABLE_CONNECTED:
            /* TODO: Add any User firmware processed when a USB cable is connected. */
            break;
        case CLD_USB_CABLE_DISCONNECTED:
            /* TODO: Add any User firmware processed when a USB cable is
            disconnected.*/
            break;
        case CLD_USB_ENUMERATED_CONFIGURED:
            /* TODO: Add any User firmware processed when a Device has been
            enumerated.*/
            break;
        case CLD_USB_UN_CONFIGURED:
            /* TODO: Add any User firmware processed when a Device USB Configuration
            is set to 0.*/
            break;
        case CLD_USB_BUS_RESET:
            /* TODO: Add any User firmware processed when a USB Bus Reset occurs. */
            break;
    }
}

static void user_cld_lib_status (unsigned short status_code, void * p_additional_data,
    unsigned short additional_data_size)
{
    /* TODO: Process the library status if needed. The status can also be decoded to
    a USB readable string using cld_lib_status_decode as shown below: */

    char * p_str = cld_lib_status_decode(status_code, p_additional_data,
        additional_data_size);
}

```

```

/* The following function will transmit the specified memory using
the Serial Data Bulk IN endpoint. */
static void user_cdc_transmit_serial_data_in_data (void)
{
    static CLD_USB_Transfer_Params transfer_params;

    transfer_params.num_bytes = /* TODO: Set number of Bulk IN bytes */
    transfer_params.p_data_buffer = /* TODO: address Bulk IN data */
    transfer_params.callback.usb_in_transfer_complete = /* TODO: Set to User callback
function or NULL */;
    transfer_params.callback.fp_transfer_aborted_callback = /* TODO: Set to User
callback
NULL */;
    transfer_params.callback.transfer_timeout_ms = /* TODO: Set to desired timeout in
milliseconds or 0 to disable the
timeout*/;

    if (cld_sc57x_cdc_lib_transmit_serial_data(&transfer_params) ==
        CLD_USB_TRANSMIT_SUCCESSFUL)
    {
        /* Bulk IN transfer initiated successfully */
    }
    else
    {
        /* Bulk IN transfer was unsuccessful */
    }
}

```